

How to drive the camera OV7670 on Arduino Nano

Hardware

Wire the camera belong to the table below

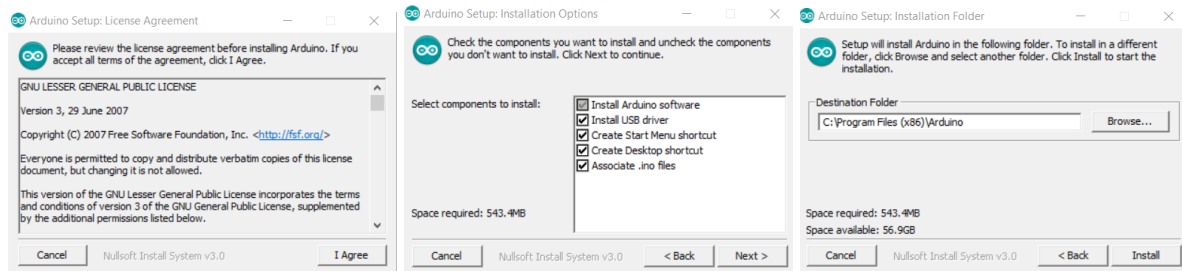
OV7670 camera module	Arduino Nano
3.3v	3.3v
GND	GND
SIOC	A5
SIOD	A4
VSYNC	8
HREF	10
PCLK	12
XCLK	9
D7, D6, D5, D4, D3, D2	7, 6, 5, 4, 3, 2
D1	1 / RX
D0	0 / TX

You can quickly find the PIN configuration of both the camera module and the arduino by searching on Google.

Software

Download and install the arduino software for your OS

<https://www.arduino.cc/en/software>

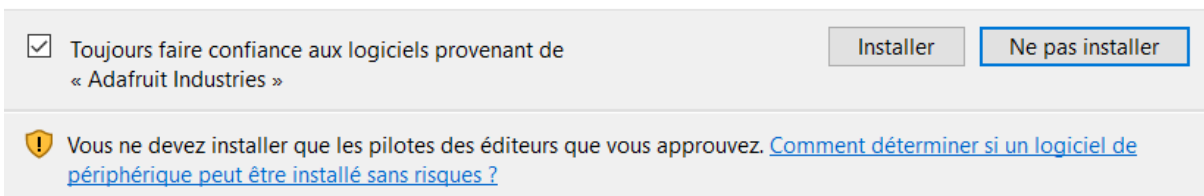


click on 'I Agree', 'Next', 'Install'

Sécurité Windows

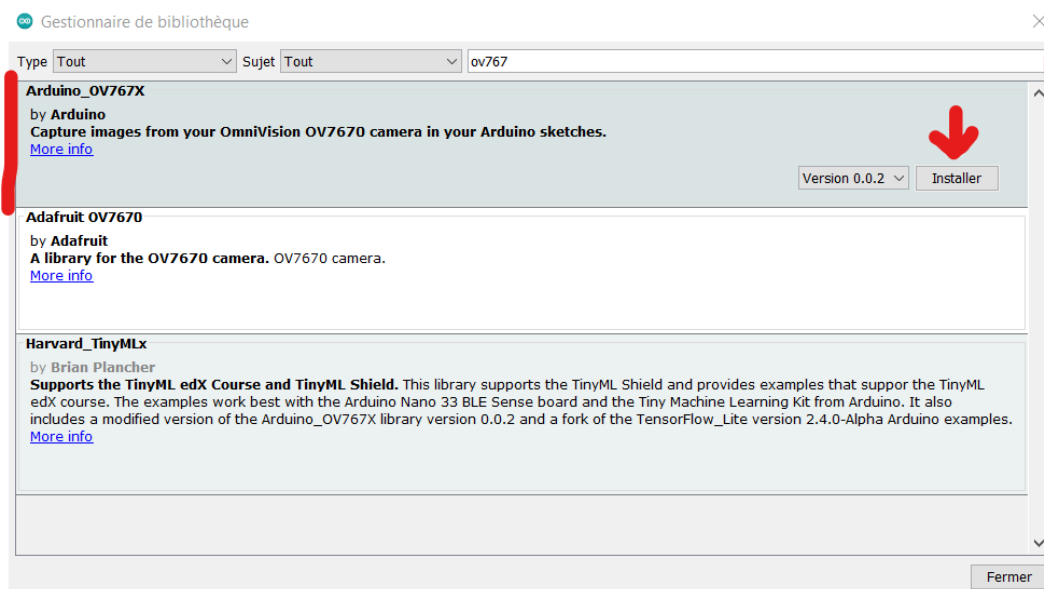
Voulez-vous installer ce logiciel de périphérique ?

Nom : Adafruit Industries LLC Ports (COM et LP...
Éditeur : Adafruit Industries



Install each required driver

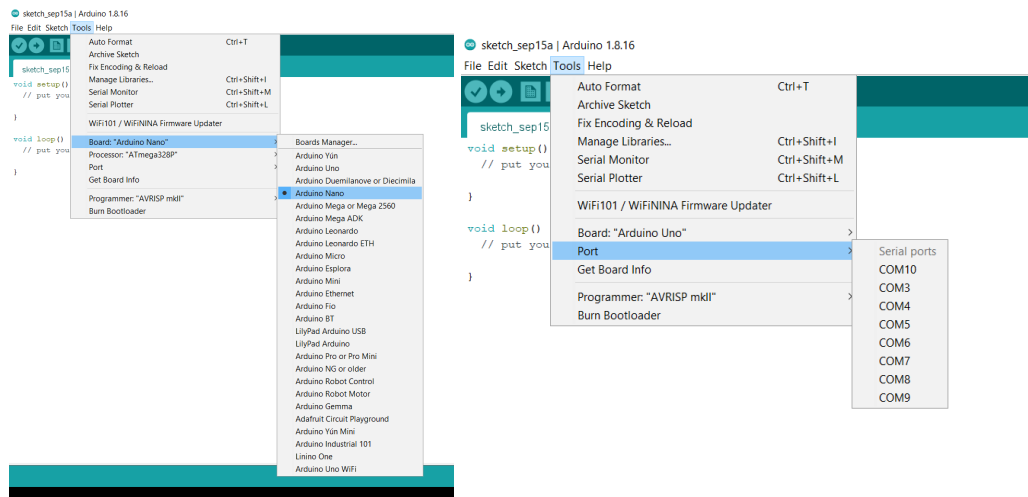
Open Arduino IDE then Tools > Manage Libraries and search for the OV767X library by Arduino. Please choose this one, others libraries are configured for a different wiring.



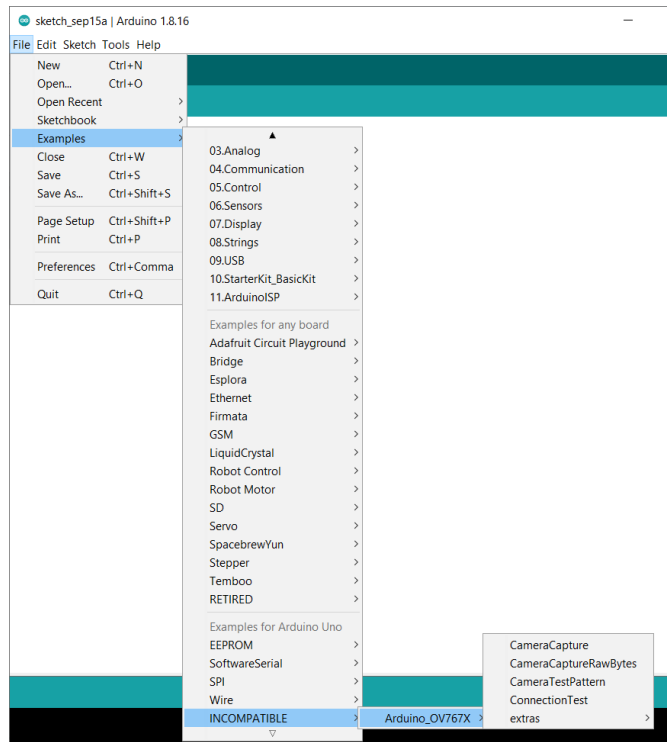
Press Install

Connect the board to your computer
go to Tools => Board, then select Arduino Nano

Then select Tools => PORT and choose the port on which the arduino is wired.



In File => Examples find the Arduino_OV767X and load CameraCaptureRawBytes.



Upload to your Arduino.



Your Arduino is now outputting raw image binary over serial.

For further informations (Guideline to see them), please visit

<https://blog.arduino.cc/2020/06/24/machine-vision-with-low-cost-camera-modules/>