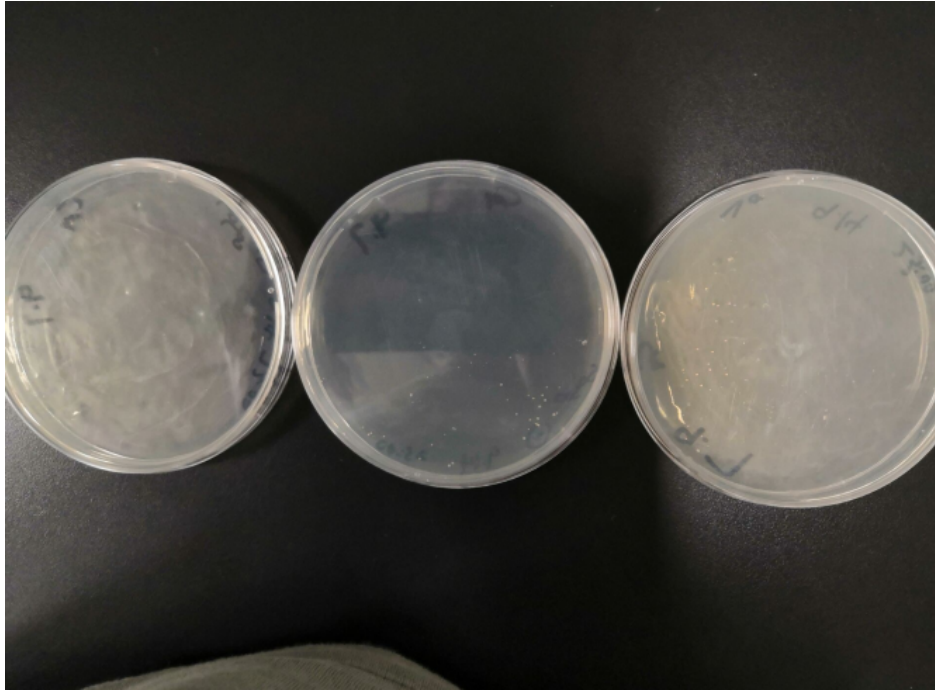


Team Name--XHD-Wuhan-China

2020.8.17

Reorganization and transformation validation

It's a good selection of six clones.



From left to right were SOSOO ①, sosoo ② and vazyme.

Six clones were selected from sosoo and vazyme respectively.

Shaking at 37 °C at 220 rpm.

Clonal shaking bacteria.

2020.8.18

1、 Colony PCR: (860 BP) Qing family red enzyme

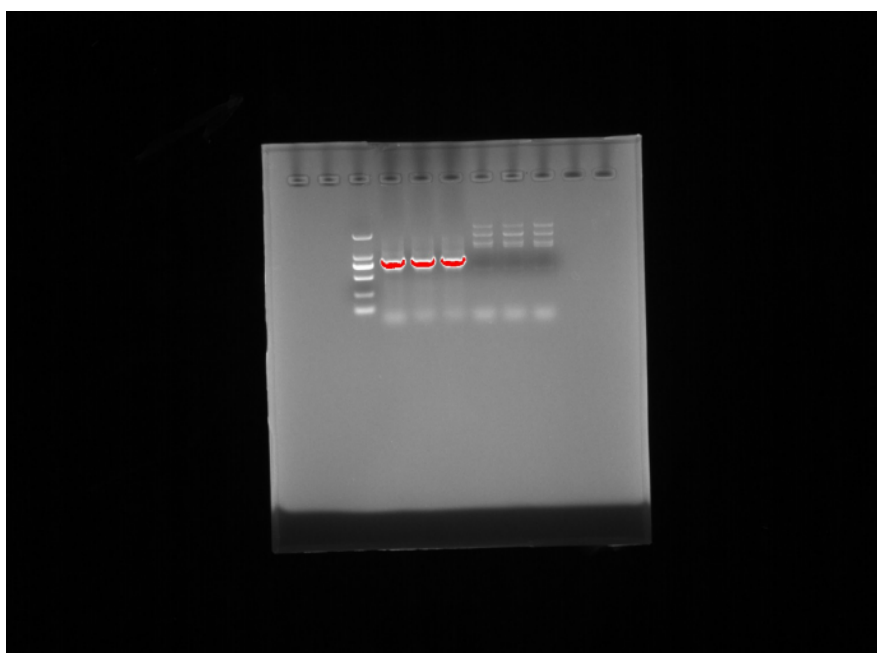
2 × T5 Super PCR Mix: 25μl

liner_ pSB1C3_ bottom: 2μl

Pasr-pSB1C3- bottom: 2μl

Template: 1 μl

dd H₂O: 20μl



No.1, 2 and 3 appeared normal band (2000 marker, 860bp target band)

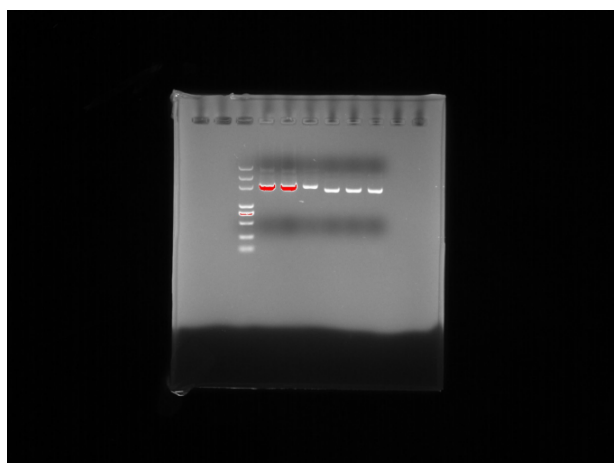
2、 The length of recombinant plasmid was verified by plasmid

Recombinant plasmid: 3275 BP

The concentration of recombinant plasmid was as follows :

| No. | Sample ID | ID# | Sample Ty | SW (nm) | SW Abs | 260 Abs | 280 Abs | 260 / 280 | 260 / 23 | Conc. (ng) | Dilution | Time |
|-----|----------------|-----|-----------|---------|--------|---------|---------|-----------|----------|------------|----------|------------|
| 1 | Pasr-pSB1C3质粒① | 1 | dsDNA | 260 | 1.32 | 1.32 | 0.699 | 1.888 | 2.092 | 66 | | 1 11:23:57 |
| 2 | Pasr-pSB1C3质粒② | 2 | dsDNA | 260 | 1.615 | 1.615 | 0.877 | 1.842 | 1.792 | 80.75 | | 1 11:24:26 |
| 3 | Pasr-pSB1C3质粒③ | 3 | dsDNA | 260 | 0.481 | 0.481 | 0.252 | 1.909 | 1.775 | 24.05 | | 1 11:24:56 |
| 4 | Pasr-pSB1C3质粒④ | 4 | dsDNA | 260 | 0.486 | 0.486 | 0.264 | 1.841 | 1.642 | 24.3 | | 1 11:25:25 |
| 5 | Pasr-pSB1C3质粒⑤ | 5 | dsDNA | 260 | 0.51 | 0.51 | 0.274 | 1.861 | 1.635 | 25.5 | | 1 11:26:10 |
| 6 | Pasr-pSB1C3质粒⑥ | 6 | dsDNA | 260 | 0.49 | 0.49 | 0.271 | 1.808 | 1.561 | 24.5 | | 1 11:26:47 |

Electrophoresis verification:



the concentrations of No. 1 , 2 and 3 were normal, and there was a normal band (5000marker, 3295bp target band)

3、 Preservation of bacteria

2020.8.19

1、 Transfer of Pasr-pSB1C3 plasmid strain by shaking last night

1: 100 transfer capacity

Three tubes of 5 ml + 50ul Pasr-pSB1C3 plasmid bacteria.

The plasmid was composed of 200 µl / L SBL and 20 µl / L PbSr 3.

2、 Preparation of M9 medium

M9 mother liquor preparation: (980ml deionized water) high pressure sterilization

Na₂HPO₄·12H₂O: 17.1g (molecular weight 358.14)

KH₂PO₄: 3g (molecular weight 136.09)

NaCl:0.5g

NH₄Cl:1g

1mMgSO₄·7H₂O: 2.46g was added to 10ml dd H₂O and autoclaved

20% Glucose: 4g Glucose added to 20ml dd H₂O, filtered and sterilized

1mCaCl₂·6H₂O: 2.191g was added into 10ml dd H₂O, and autoclaved

2ml MgSO₄100µl CaCl₂ and 20ml filtered and sterilized Glucose were added into the above 980ml mother liquor.

M9 medium was prepared successfully.

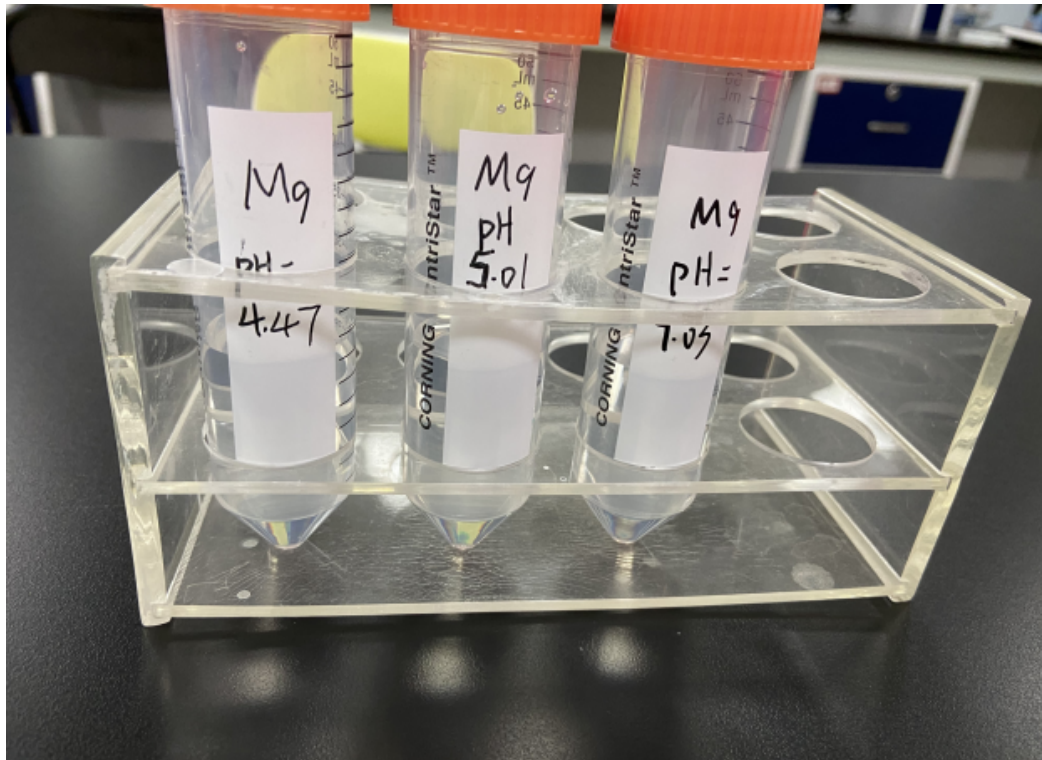
3、 The bacteria liquid was cultured to logarithmic growth stage and put into 4°C refrigerator to avoid the growth of bacteria as far as possible

Adjust the pH of M9 medium

The pH of the original medium was 7.03.

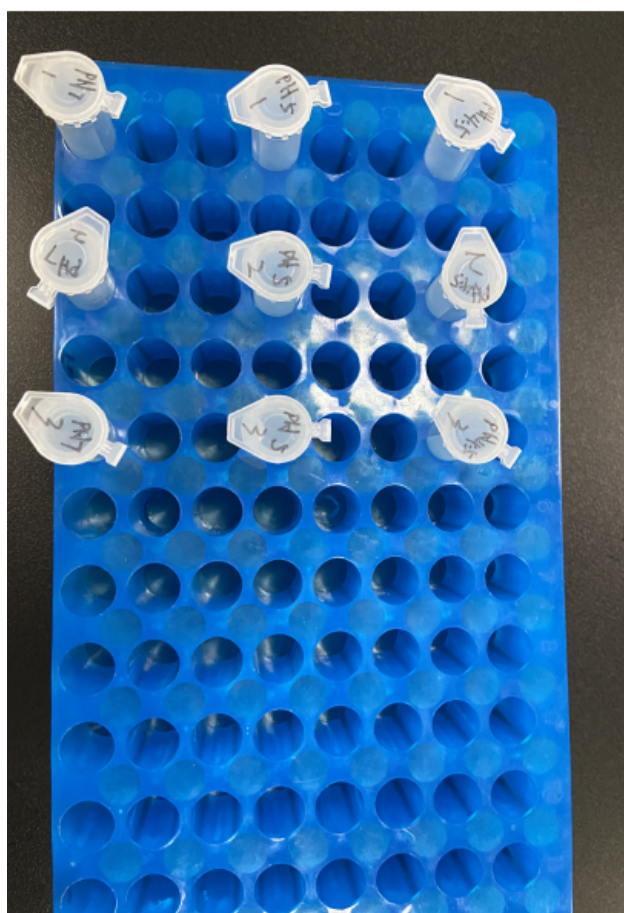
Firstly, 75 µl HCl was added, and the pH is 3.89. Secondly, 500 µl M9 medium was added, and the pH is 4.44. Thirdly, 20 µl M9 medium was added ,and the pH is 4.47.

Firstly , 80 µl HCl was added, and the pH is 4.43. Secondly, 500 µl M9 medium was added,and the pH is 4.93. Thirdly , 20 µl M9 medium was added , and the pH is 5.01.



1 ml of bacterial liquid (Pasr-pSB1C3 plasmid strain) in logarithmic growth phase was centrifuged at 3000 RMP for 5 min, and the supernatant was discarded

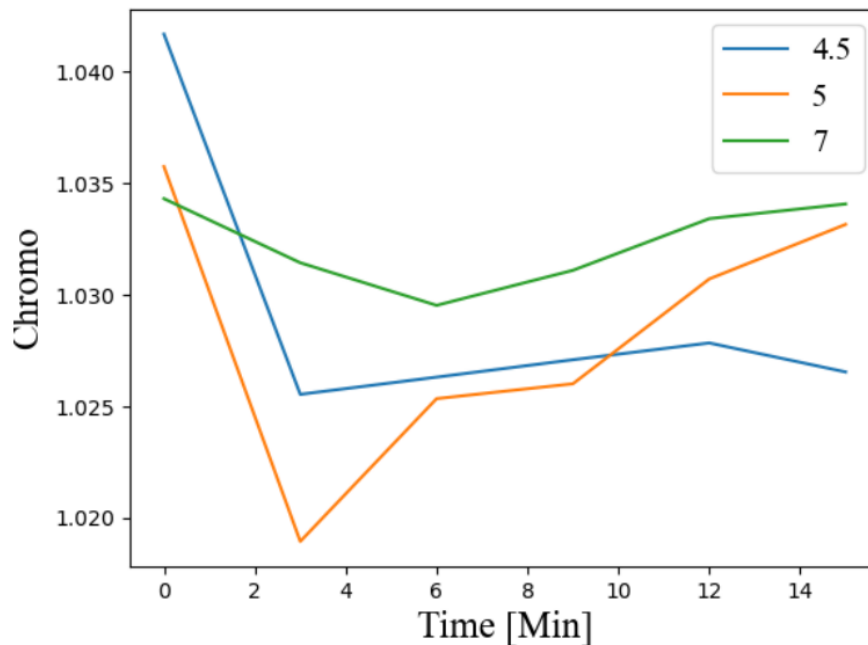
200 μ l of the above medium was added, and three biological repeats were made for each gradient.



100 μ l was added into 96 well plate and determined every 3 minutes for half an hour

The data of OD580 and OD600 were as follows:

| | A | B | C | D | E | F | G | H | I | J | K | L | M | N | O | P |
|----|---|-------|-------|-------|-------|-------|-------|------------|---|-------|-------|-------|-------|-------|-------|------------|
| 1 | | 1 | 2 | 3 | 4 | 5 | 6 | | | 1 | 2 | 3 | 4 | 5 | 6 | |
| 2 | D | 0.695 | 0.529 | 0.693 | 0.039 | 0.04 | 0.039 | Read 1:580 | D | 0.667 | 0.509 | 0.669 | 0.039 | 0.04 | 0.039 | Read 1:580 |
| 3 | E | 0.683 | 0.702 | 0.708 | 0.041 | 0.041 | 0.041 | Read 1:580 | E | 0.659 | 0.679 | 0.685 | 0.04 | 0.041 | 0.04 | Read 1:580 |
| 4 | F | 0.761 | 0.759 | 0.739 | 0.041 | 0.039 | 0.039 | Read 1:580 | F | 0.736 | 0.734 | 0.718 | 0.041 | 0.039 | 0.039 | Read 1:580 |
| 5 | | | | | | | | | | | | | | | | |
| 6 | | 1 | 2 | 3 | 4 | 5 | 6 | | | 1 | 2 | 3 | 4 | 5 | 6 | |
| 7 | D | 0.636 | 0.495 | 0.633 | 0.039 | 0.04 | 0.039 | Read 2:580 | D | 0.62 | 0.482 | 0.621 | 0.039 | 0.04 | 0.039 | Read 2:580 |
| 8 | E | 0.632 | 0.657 | 0.661 | 0.041 | 0.041 | 0.04 | Read 2:580 | E | 0.62 | 0.646 | 0.65 | 0.041 | 0.041 | 0.04 | Read 2:580 |
| 9 | F | 0.715 | 0.709 | 0.696 | 0.041 | 0.039 | 0.039 | Read 2:580 | F | 0.695 | 0.691 | 0.673 | 0.041 | 0.039 | 0.039 | Read 2:580 |
| 10 | | | | | | | | | | | | | | | | |
| 11 | | 1 | 2 | 3 | 4 | 5 | 6 | | | 1 | 2 | 3 | 4 | 5 | 6 | |
| 12 | D | 0.633 | 0.491 | 0.631 | 0.038 | 0.04 | 0.039 | Read 3:580 | D | 0.617 | 0.48 | 0.616 | 0.039 | 0.04 | 0.038 | Read 3:580 |
| 13 | E | 0.63 | 0.655 | 0.657 | 0.041 | 0.041 | 0.04 | Read 3:580 | E | 0.614 | 0.64 | 0.642 | 0.04 | 0.041 | 0.04 | Read 3:580 |
| 14 | F | 0.711 | 0.706 | 0.693 | 0.041 | 0.039 | 0.039 | Read 3:580 | F | 0.692 | 0.682 | 0.674 | 0.041 | 0.038 | 0.039 | Read 3:580 |
| 15 | | | | | | | | | | | | | | | | |
| 16 | | 1 | 2 | 3 | 4 | 5 | 6 | | | 1 | 2 | 3 | 4 | 5 | 6 | |
| 17 | D | 0.629 | 0.491 | 0.628 | 0.039 | 0.04 | 0.039 | Read 4:580 | D | 0.613 | 0.478 | 0.614 | 0.039 | 0.04 | 0.039 | Read 4:580 |
| 18 | E | 0.628 | 0.655 | 0.654 | 0.041 | 0.041 | 0.041 | Read 4:580 | E | 0.612 | 0.64 | 0.638 | 0.041 | 0.041 | 0.04 | Read 4:580 |
| 19 | F | 0.709 | 0.7 | 0.699 | 0.041 | 0.039 | 0.039 | Read 4:580 | F | 0.69 | 0.679 | 0.679 | 0.041 | 0.039 | 0.039 | Read 4:580 |
| 20 | | | | | | | | | | | | | | | | |
| 21 | | 1 | 2 | 3 | 4 | 5 | 6 | | | 1 | 2 | 3 | 4 | 5 | 6 | |
| 22 | D | 0.627 | 0.49 | 0.625 | 0.039 | 0.04 | 0.039 | Read 5:580 | D | 0.61 | 0.476 | 0.611 | 0.039 | 0.04 | 0.038 | Read 5:580 |
| 23 | E | 0.629 | 0.653 | 0.653 | 0.041 | 0.041 | 0.041 | Read 5:580 | E | 0.61 | 0.634 | 0.635 | 0.04 | 0.041 | 0.04 | Read 5:580 |
| 24 | F | 0.715 | 0.706 | 0.708 | 0.041 | 0.039 | 0.039 | Read 5:580 | F | 0.693 | 0.685 | 0.686 | 0.041 | 0.039 | 0.039 | Read 5:580 |
| 25 | | | | | | | | | | | | | | | | |
| 26 | | 1 | 2 | 3 | 4 | 5 | 6 | | | 1 | 2 | 3 | 4 | 5 | 6 | |
| 27 | D | 0.627 | 0.49 | 0.625 | 0.039 | 0.04 | 0.039 | Read 6:580 | D | 0.608 | 0.479 | 0.612 | 0.039 | 0.04 | 0.038 | Read 6:580 |
| 28 | E | 0.626 | 0.651 | 0.652 | 0.041 | 0.041 | 0.04 | Read 6:580 | E | 0.606 | 0.631 | 0.633 | 0.04 | 0.041 | 0.04 | Read 6:580 |
| 29 | F | 0.725 | 0.713 | 0.713 | 0.041 | 0.038 | 0.039 | Read 6:580 | F | 0.703 | 0.692 | 0.69 | 0.041 | 0.039 | 0.039 | Read 6:580 |



2020.8.20

1、Transfer of Pasr-pSB1C3 plasmid strain shaken yesterday

1: 100 transfer capacity

The plasmid was composed of 200 μ l LB, 20 μ l Cm, and 200 μ l Pasr-pSB1C3

2 hours later, the OD was 0.454.

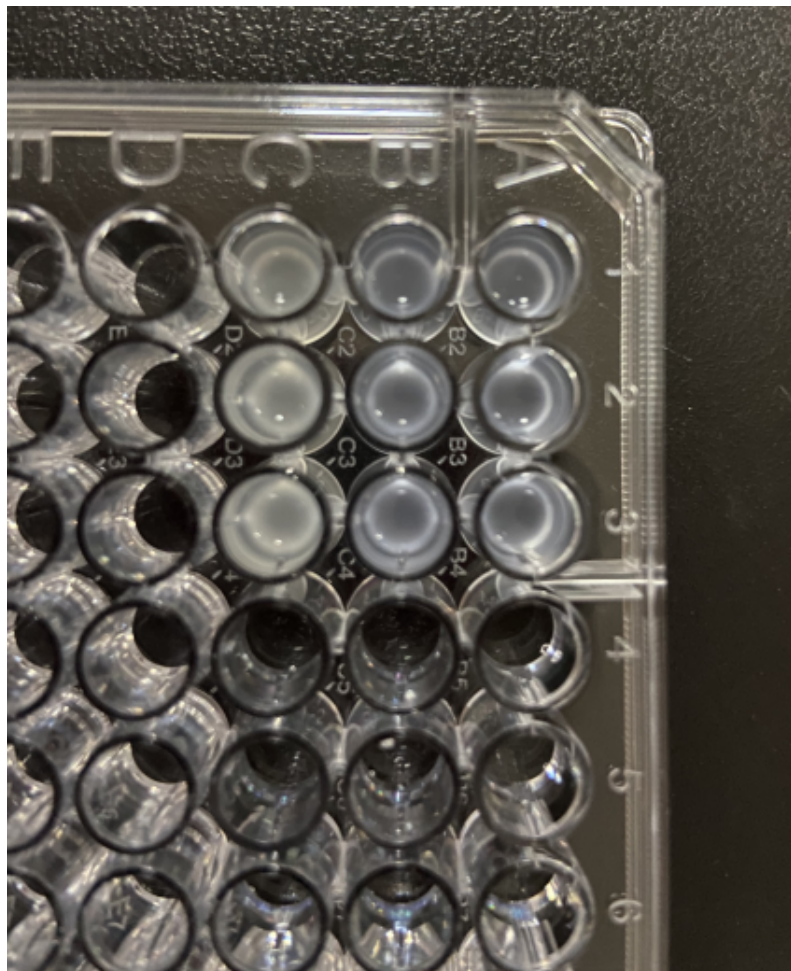
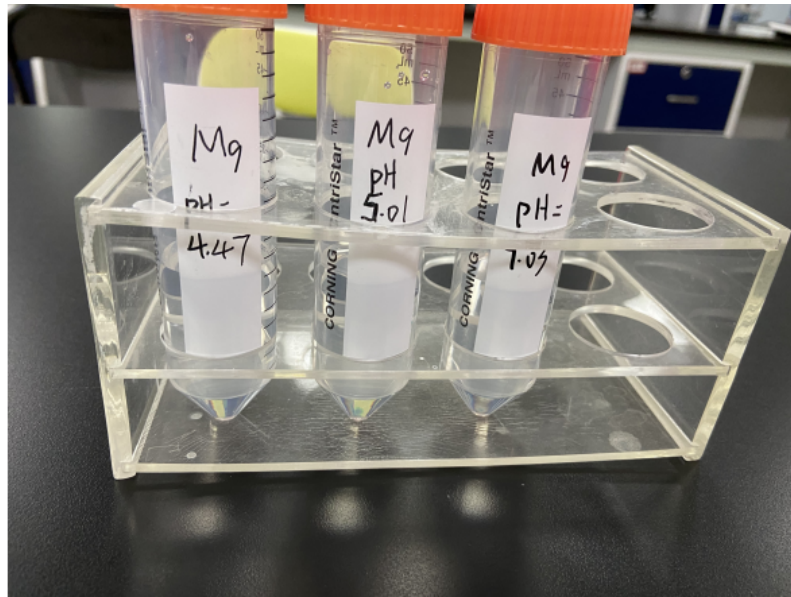
2、Transfer to M9 medium

Take 1000ml and centrifuge at 4000rpm for 10min.

Abandon supernatant solution.

200 μ l M9 medium (pH = 4.5 , 5 , 7) was added.

Each pH was repeated in three groups.



Sampling:

When 200 μ l was added into each pore, the pH values were 4.5, 5 and 7 respectively.

The first three wells were samples, and the last three wells were M9 medium corresponding to pH.

The shaking time of the microplate :

In the first hour, measure every 3 minutes.

In the second hour, measure once every 10 minutes.

In the third hour, measure every 20 minutes.

At the fourth hour, the fifth hour and 30min.

The data are attached:

| 结果 | | | | | | | | | | | | | |
|----|-------|-------|-------|-------|-------|-------|---|---|---|----|----|----|-------------|
| A | 1 | 2 | 3 | 4 | 5 | 6 | 7 | 8 | 9 | 10 | 11 | 12 | |
| | 0.515 | 0.573 | 0.527 | 0.039 | 0.039 | 0.038 | | | | | | | Read 1:580 |
| | 0.497 | 0.539 | 0.507 | 0.040 | 0.039 | 0.038 | | | | | | | Read 1:600 |
| | 0.517 | 0.571 | 0.530 | 0.039 | 0.039 | 0.038 | | | | | | | Read 2:580 |
| | 0.500 | 0.546 | 0.512 | 0.040 | 0.039 | 0.038 | | | | | | | Read 2:600 |
| | 0.515 | 0.567 | 0.530 | 0.039 | 0.039 | 0.038 | | | | | | | Read 3:580 |
| | 0.497 | 0.541 | 0.511 | 0.040 | 0.039 | 0.038 | | | | | | | Read 3:600 |
| | 0.515 | 0.564 | 0.529 | 0.039 | 0.039 | 0.038 | | | | | | | Read 4:580 |
| | 0.496 | 0.539 | 0.511 | 0.040 | 0.040 | 0.039 | | | | | | | Read 4:600 |
| | 0.516 | 0.564 | 0.530 | 0.039 | 0.039 | 0.038 | | | | | | | Read 5:580 |
| | 0.497 | 0.539 | 0.512 | 0.040 | 0.039 | 0.038 | | | | | | | Read 5:600 |
| | 0.516 | 0.565 | 0.530 | 0.040 | 0.039 | 0.039 | | | | | | | Read 6:580 |
| | 0.498 | 0.540 | 0.512 | 0.040 | 0.039 | 0.038 | | | | | | | Read 6:600 |
| | 0.517 | 0.567 | 0.531 | 0.039 | 0.039 | 0.039 | | | | | | | Read 7:580 |
| | 0.498 | 0.543 | 0.513 | 0.040 | 0.039 | 0.039 | | | | | | | Read 7:600 |
| | 0.518 | 0.570 | 0.532 | 0.039 | 0.039 | 0.038 | | | | | | | Read 8:580 |
| | 0.498 | 0.545 | 0.514 | 0.039 | 0.039 | 0.038 | | | | | | | Read 8:600 |
| | 0.521 | 0.574 | 0.533 | 0.040 | 0.039 | 0.038 | | | | | | | Read 9:580 |
| | 0.500 | 0.550 | 0.514 | 0.040 | 0.039 | 0.038 | | | | | | | Read 9:600 |
| | 0.524 | 0.577 | 0.536 | 0.039 | 0.039 | 0.038 | | | | | | | Read 10:580 |
| | 0.502 | 0.552 | 0.516 | 0.040 | 0.039 | 0.038 | | | | | | | Read 10:600 |
| | 0.528 | 0.581 | 0.539 | 0.039 | 0.039 | 0.038 | | | | | | | Read 11:580 |
| | 0.506 | 0.556 | 0.518 | 0.040 | 0.039 | 0.038 | | | | | | | Read 11:600 |
| | 0.533 | 0.587 | 0.543 | 0.039 | 0.039 | 0.038 | | | | | | | Read 12:580 |
| | 0.510 | 0.561 | 0.522 | 0.040 | 0.039 | 0.038 | | | | | | | Read 12:600 |
| | 0.536 | 0.588 | 0.547 | 0.039 | 0.039 | 0.038 | | | | | | | Read 13:580 |
| | 0.513 | 0.563 | 0.525 | 0.040 | 0.039 | 0.038 | | | | | | | Read 13:600 |
| | 0.541 | 0.592 | 0.550 | 0.039 | 0.039 | 0.038 | | | | | | | Read 14:580 |
| | 0.517 | 0.567 | 0.527 | 0.040 | 0.039 | 0.038 | | | | | | | Read 14:600 |
| | 0.543 | 0.597 | 0.552 | 0.039 | 0.039 | 0.038 | | | | | | | Read 15:580 |
| | 0.520 | 0.571 | 0.529 | 0.040 | 0.040 | 0.039 | | | | | | | Read 15:600 |
| | 0.549 | 0.600 | 0.554 | 0.039 | 0.039 | 0.038 | | | | | | | Read 16:580 |
| | 0.524 | 0.574 | 0.531 | 0.039 | 0.039 | 0.038 | | | | | | | Read 16:600 |
| | 0.551 | 0.602 | 0.557 | 0.040 | 0.040 | 0.038 | | | | | | | Read 17:580 |
| | 0.526 | 0.575 | 0.533 | 0.040 | 0.039 | 0.038 | | | | | | | Read 17:600 |
| | 0.553 | 0.605 | 0.560 | 0.039 | 0.039 | 0.038 | | | | | | | Read 18:580 |
| | 0.529 | 0.578 | 0.537 | 0.040 | 0.040 | 0.039 | | | | | | | Read 18:600 |
| | 0.556 | 0.608 | 0.562 | 0.039 | 0.039 | 0.038 | | | | | | | Read 19:580 |
| | 0.531 | 0.582 | 0.539 | 0.040 | 0.039 | 0.038 | | | | | | | Read 19:600 |
| | 0.559 | 0.611 | 0.564 | 0.040 | 0.040 | 0.038 | | | | | | | Read 20:580 |
| | 0.534 | 0.584 | 0.541 | 0.040 | 0.039 | 0.038 | | | | | | | Read 20:600 |
| | 0.563 | 0.616 | 0.568 | 0.040 | 0.040 | 0.038 | | | | | | | Read 21:580 |
| | 0.538 | 0.589 | 0.544 | 0.040 | 0.039 | 0.038 | | | | | | | Read 21:600 |
| | 0.561 | 0.615 | 0.568 | 0.040 | 0.039 | 0.038 | | | | | | | Read 22:580 |
| | 0.540 | 0.593 | 0.549 | 0.040 | 0.039 | 0.038 | | | | | | | Read 22:600 |
| | 0.567 | 0.614 | 0.574 | 0.039 | 0.039 | 0.038 | | | | | | | Read 23:580 |
| | 0.547 | 0.593 | 0.555 | 0.040 | 0.039 | 0.038 | | | | | | | Read 23:600 |
| | 0.574 | 0.619 | 0.582 | 0.039 | 0.039 | 0.038 | | | | | | | Read 24:580 |
| | 0.554 | 0.599 | 0.563 | 0.040 | 0.039 | 0.039 | | | | | | | Read 24:600 |
| | 0.580 | 0.624 | 0.588 | 0.040 | 0.039 | 0.038 | | | | | | | Read 25:580 |
| | 0.561 | 0.604 | 0.570 | 0.039 | 0.039 | 0.038 | | | | | | | Read 25:600 |
| | 0.586 | 0.628 | 0.597 | 0.039 | 0.039 | 0.038 | | | | | | | Read 26:580 |
| | 0.567 | 0.609 | 0.579 | 0.040 | 0.039 | 0.038 | | | | | | | Read 26:600 |
| | 0.590 | 0.634 | 0.604 | 0.040 | 0.039 | 0.038 | | | | | | | Read 27:580 |
| | 0.572 | 0.615 | 0.585 | 0.040 | 0.039 | 0.039 | | | | | | | Read 27:600 |
| | 0.599 | 0.639 | 0.607 | 0.039 | 0.039 | 0.038 | | | | | | | Read 28:580 |
| | 0.582 | 0.621 | 0.589 | 0.040 | 0.039 | 0.038 | | | | | | | Read 28:600 |
| | 0.603 | 0.639 | 0.607 | 0.040 | 0.039 | 0.038 | | | | | | | Read 29:580 |
| | 0.587 | 0.622 | 0.592 | 0.040 | 0.039 | 0.038 | | | | | | | Read 29:600 |
| | 0.606 | 0.639 | 0.606 | 0.039 | 0.039 | 0.038 | | | | | | | Read 30:580 |
| | 0.592 | 0.623 | 0.591 | 0.040 | 0.039 | 0.038 | | | | | | | Read 30:600 |
| | 0.602 | 0.636 | 0.602 | 0.039 | 0.039 | 0.038 | | | | | | | Read 31:580 |
| | 0.589 | 0.620 | 0.588 | 0.040 | 0.039 | 0.038 | | | | | | | Read 31:600 |
| | 0.601 | 0.629 | 0.598 | 0.040 | 0.039 | 0.038 | | | | | | | Read 32:580 |
| | 0.588 | 0.615 | 0.584 | 0.040 | 0.040 | 0.038 | | | | | | | Read 32:600 |
| | 0.602 | 0.618 | 0.589 | 0.039 | 0.039 | 0.038 | | | | | | | Read 33:580 |
| | 0.590 | 0.604 | 0.576 | 0.040 | 0.039 | 0.038 | | | | | | | Read 33:600 |
| | 0.608 | 0.609 | 0.583 | 0.039 | 0.039 | 0.038 | | | | | | | Read 34:580 |
| | 0.597 | 0.596 | 0.570 | 0.040 | 0.039 | 0.038 | | | | | | | Read 34:600 |
| B | 0.546 | 0.543 | 0.525 | 0.039 | 0.039 | 0.039 | | | | | | | Read 1:580 |
| | 0.523 | 0.519 | 0.500 | 0.039 | 0.040 | 0.040 | | | | | | | Read 1:600 |

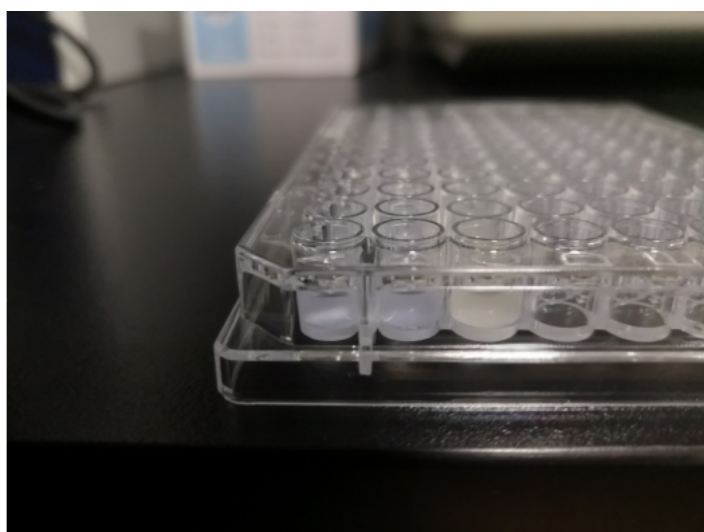
| | | | | | | | |
|---|-------|-------|-------|-------|-------|-------|-------------|
| B | 0.546 | 0.543 | 0.525 | 0.039 | 0.039 | 0.039 | Read 1:580 |
| | 0.523 | 0.519 | 0.500 | 0.039 | 0.040 | 0.040 | Read 1:600 |
| | 0.526 | 0.517 | 0.512 | 0.039 | 0.039 | 0.039 | Read 2:580 |
| | 0.512 | 0.504 | 0.496 | 0.039 | 0.039 | 0.040 | Read 2:600 |
| | 0.529 | 0.517 | 0.511 | 0.040 | 0.039 | 0.039 | Read 3:580 |
| | 0.513 | 0.504 | 0.496 | 0.039 | 0.040 | 0.039 | Read 3:600 |
| | 0.532 | 0.519 | 0.510 | 0.039 | 0.039 | 0.039 | Read 4:580 |
| | 0.514 | 0.505 | 0.495 | 0.039 | 0.040 | 0.040 | Read 4:600 |
| | 0.533 | 0.520 | 0.513 | 0.040 | 0.039 | 0.039 | Read 5:580 |
| | 0.515 | 0.506 | 0.498 | 0.039 | 0.039 | 0.039 | Read 5:600 |
| | 0.536 | 0.524 | 0.517 | 0.039 | 0.039 | 0.039 | Read 6:580 |
| | 0.519 | 0.510 | 0.502 | 0.039 | 0.040 | 0.040 | Read 6:600 |
| | 0.542 | 0.527 | 0.517 | 0.039 | 0.039 | 0.039 | Read 7:580 |
| | 0.524 | 0.513 | 0.501 | 0.039 | 0.040 | 0.040 | Read 7:600 |
| | 0.547 | 0.529 | 0.521 | 0.039 | 0.039 | 0.039 | Read 8:580 |
| | 0.530 | 0.515 | 0.505 | 0.039 | 0.039 | 0.040 | Read 8:600 |
| | 0.549 | 0.533 | 0.526 | 0.039 | 0.039 | 0.039 | Read 9:580 |
| | 0.531 | 0.519 | 0.510 | 0.039 | 0.040 | 0.039 | Read 9:600 |
| | 0.555 | 0.539 | 0.531 | 0.039 | 0.039 | 0.039 | Read 10:580 |
| | 0.536 | 0.523 | 0.515 | 0.039 | 0.039 | 0.039 | Read 10:600 |
| | 0.560 | 0.546 | 0.538 | 0.039 | 0.039 | 0.039 | Read 11:580 |
| | 0.542 | 0.530 | 0.521 | 0.039 | 0.039 | 0.040 | Read 11:600 |
| | 0.567 | 0.555 | 0.544 | 0.039 | 0.039 | 0.039 | Read 12:580 |
| | 0.548 | 0.539 | 0.527 | 0.040 | 0.039 | 0.039 | Read 12:600 |
| | 0.573 | 0.563 | 0.552 | 0.039 | 0.039 | 0.039 | Read 13:580 |
| | 0.554 | 0.546 | 0.535 | 0.040 | 0.040 | 0.040 | Read 13:600 |
| | 0.579 | 0.570 | 0.556 | 0.039 | 0.039 | 0.039 | Read 14:580 |
| | 0.559 | 0.552 | 0.539 | 0.039 | 0.039 | 0.039 | Read 14:600 |
| | 0.583 | 0.579 | 0.560 | 0.039 | 0.039 | 0.039 | Read 15:580 |
| | 0.565 | 0.561 | 0.543 | 0.040 | 0.040 | 0.040 | Read 15:600 |
| | 0.590 | 0.588 | 0.566 | 0.039 | 0.039 | 0.039 | Read 16:580 |
| | 0.570 | 0.568 | 0.547 | 0.039 | 0.039 | 0.040 | Read 16:600 |
| | 0.596 | 0.592 | 0.572 | 0.040 | 0.039 | 0.040 | Read 17:580 |
| | 0.576 | 0.572 | 0.553 | 0.039 | 0.039 | 0.039 | Read 17:600 |
| | 0.600 | 0.597 | 0.576 | 0.039 | 0.039 | 0.039 | Read 18:580 |
| | 0.581 | 0.578 | 0.558 | 0.039 | 0.040 | 0.040 | Read 18:600 |
| | 0.603 | 0.603 | 0.580 | 0.039 | 0.039 | 0.039 | Read 19:580 |
| | 0.583 | 0.583 | 0.562 | 0.039 | 0.040 | 0.039 | Read 19:600 |
| | 0.609 | 0.611 | 0.585 | 0.039 | 0.039 | 0.039 | Read 20:580 |
| | 0.588 | 0.591 | 0.567 | 0.039 | 0.040 | 0.039 | Read 20:600 |
| | 0.612 | 0.618 | 0.590 | 0.039 | 0.039 | 0.040 | Read 21:580 |
| | 0.591 | 0.597 | 0.571 | 0.039 | 0.039 | 0.039 | Read 21:600 |
| | 0.621 | 0.621 | 0.602 | 0.039 | 0.039 | 0.039 | Read 22:580 |
| | 0.601 | 0.602 | 0.584 | 0.039 | 0.039 | 0.039 | Read 22:600 |
| | 0.630 | 0.626 | 0.612 | 0.039 | 0.039 | 0.039 | Read 23:580 |
| | 0.610 | 0.609 | 0.593 | 0.039 | 0.040 | 0.039 | Read 23:600 |
| | 0.635 | 0.633 | 0.620 | 0.039 | 0.039 | 0.039 | Read 24:580 |
| | 0.615 | 0.615 | 0.602 | 0.039 | 0.040 | 0.040 | Read 24:600 |
| | 0.640 | 0.637 | 0.623 | 0.039 | 0.040 | 0.039 | Read 25:580 |
| | 0.619 | 0.619 | 0.604 | 0.039 | 0.040 | 0.039 | Read 25:600 |
| | 0.640 | 0.642 | 0.628 | 0.039 | 0.039 | 0.039 | Read 26:580 |
| | 0.621 | 0.624 | 0.610 | 0.039 | 0.039 | 0.040 | Read 26:600 |
| | 0.643 | 0.650 | 0.633 | 0.039 | 0.039 | 0.039 | Read 27:580 |
| | 0.624 | 0.632 | 0.615 | 0.039 | 0.040 | 0.040 | Read 27:600 |
| | 0.647 | 0.655 | 0.641 | 0.039 | 0.039 | 0.039 | Read 28:580 |
| | 0.628 | 0.637 | 0.624 | 0.039 | 0.039 | 0.039 | Read 28:600 |
| | 0.650 | 0.659 | 0.649 | 0.039 | 0.039 | 0.039 | Read 29:580 |
| | 0.633 | 0.642 | 0.632 | 0.039 | 0.040 | 0.040 | Read 29:600 |
| | 0.657 | 0.658 | 0.650 | 0.039 | 0.039 | 0.039 | Read 30:580 |
| | 0.641 | 0.642 | 0.633 | 0.039 | 0.040 | 0.039 | Read 30:600 |
| | 0.661 | 0.657 | 0.651 | 0.039 | 0.039 | 0.039 | Read 31:580 |
| | 0.645 | 0.642 | 0.637 | 0.040 | 0.040 | 0.040 | Read 31:600 |
| | 0.666 | 0.657 | 0.650 | 0.040 | 0.039 | 0.039 | Read 32:580 |
| | 0.651 | 0.643 | 0.636 | 0.039 | 0.040 | 0.040 | Read 32:600 |
| | 0.671 | 0.655 | 0.643 | 0.039 | 0.039 | 0.039 | Read 33:580 |
| | 0.656 | 0.641 | 0.629 | 0.039 | 0.039 | 0.039 | Read 33:600 |
| | 0.667 | 0.645 | 0.639 | 0.039 | 0.039 | 0.039 | Read 34:580 |
| | 0.652 | 0.631 | 0.625 | 0.039 | 0.039 | 0.039 | Read 34:600 |
| C | 0.601 | 0.589 | 0.589 | 0.038 | 0.038 | 0.042 | Read 1:580 |

| | M. 0.000 | M. 0.001 | M. 0.002 | M. 0.003 | M. 0.004 | M. 0.005 | Read 1:580 |
|---|----------|----------|----------|----------|----------|----------|-------------|
| C | 0.601 | 0.589 | 0.589 | 0.038 | 0.038 | 0.042 | Read 1:600 |
| | 0.574 | 0.563 | 0.563 | 0.038 | 0.038 | 0.042 | Read 2:580 |
| | 0.587 | 0.582 | 0.578 | 0.038 | 0.038 | 0.042 | Read 2:600 |
| | 0.587 | 0.562 | 0.558 | 0.038 | 0.038 | 0.042 | Read 3:580 |
| | 0.587 | 0.587 | 0.578 | 0.038 | 0.038 | 0.042 | Read 3:600 |
| | 0.565 | 0.565 | 0.558 | 0.038 | 0.038 | 0.042 | Read 4:580 |
| | 0.592 | 0.594 | 0.584 | 0.038 | 0.038 | 0.042 | Read 4:600 |
| | 0.571 | 0.570 | 0.562 | 0.038 | 0.038 | 0.042 | Read 5:580 |
| | 0.599 | 0.602 | 0.589 | 0.038 | 0.038 | 0.043 | Read 5:600 |
| | 0.577 | 0.578 | 0.567 | 0.038 | 0.038 | 0.042 | Read 6:580 |
| | 0.609 | 0.616 | 0.596 | 0.038 | 0.038 | 0.042 | Read 6:600 |
| | 0.589 | 0.593 | 0.575 | 0.038 | 0.038 | 0.042 | Read 7:580 |
| | 0.626 | 0.655 | 0.611 | 0.038 | 0.038 | 0.042 | Read 7:600 |
| | 0.606 | 0.632 | 0.590 | 0.038 | 0.038 | 0.042 | Read 8:580 |
| | 0.640 | 0.686 | 0.628 | 0.038 | 0.038 | 0.042 | Read 8:600 |
| | 0.620 | 0.661 | 0.607 | 0.038 | 0.038 | 0.042 | Read 9:580 |
| | 0.652 | 0.713 | 0.642 | 0.038 | 0.038 | 0.042 | Read 9:600 |
| | 0.631 | 0.686 | 0.622 | 0.038 | 0.038 | 0.042 | Read 10:580 |
| | 0.664 | 0.738 | 0.654 | 0.038 | 0.038 | 0.042 | Read 10:600 |
| | 0.643 | 0.711 | 0.633 | 0.038 | 0.038 | 0.042 | Read 11:580 |
| | 0.673 | 0.758 | 0.667 | 0.038 | 0.038 | 0.042 | Read 11:600 |
| | 0.651 | 0.730 | 0.646 | 0.038 | 0.038 | 0.042 | Read 12:580 |
| | 0.686 | 0.778 | 0.687 | 0.038 | 0.038 | 0.042 | Read 12:600 |
| | 0.664 | 0.748 | 0.665 | 0.038 | 0.038 | 0.042 | Read 13:580 |
| | 0.706 | 0.792 | 0.732 | 0.038 | 0.038 | 0.042 | Read 13:600 |
| | 0.683 | 0.762 | 0.712 | 0.038 | 0.038 | 0.042 | Read 14:580 |
| | 0.731 | 0.803 | 0.756 | 0.038 | 0.038 | 0.042 | Read 14:600 |
| | 0.710 | 0.771 | 0.733 | 0.038 | 0.038 | 0.042 | Read 15:580 |
| | 0.749 | 0.814 | 0.766 | 0.038 | 0.038 | 0.042 | Read 15:600 |
| | 0.725 | 0.781 | 0.745 | 0.038 | 0.038 | 0.042 | Read 16:580 |
| | 0.750 | 0.824 | 0.776 | 0.038 | 0.038 | 0.042 | Read 16:600 |
| | 0.725 | 0.790 | 0.754 | 0.038 | 0.038 | 0.042 | Read 17:580 |
| | 0.764 | 0.831 | 0.783 | 0.038 | 0.038 | 0.042 | Read 17:600 |
| | 0.740 | 0.798 | 0.762 | 0.038 | 0.038 | 0.042 | Read 18:580 |
| | 0.778 | 0.838 | 0.793 | 0.038 | 0.038 | 0.042 | Read 18:600 |
| | 0.755 | 0.805 | 0.773 | 0.038 | 0.038 | 0.042 | Read 19:580 |
| | 0.785 | 0.817 | 0.806 | 0.038 | 0.038 | 0.042 | Read 19:600 |
| | 0.762 | 0.790 | 0.784 | 0.038 | 0.038 | 0.042 | Read 20:580 |
| | 0.787 | 0.834 | 0.802 | 0.038 | 0.038 | 0.042 | Read 20:600 |
| | 0.764 | 0.805 | 0.781 | 0.038 | 0.038 | 0.042 | Read 21:580 |
| | 0.786 | 0.826 | 0.809 | 0.038 | 0.038 | 0.042 | Read 21:600 |
| | 0.763 | 0.797 | 0.787 | 0.038 | 0.038 | 0.042 | Read 22:580 |
| | 0.791 | 0.800 | 0.825 | 0.038 | 0.038 | 0.042 | Read 22:600 |
| | 0.767 | 0.777 | 0.802 | 0.038 | 0.038 | 0.042 | Read 23:580 |
| | 0.805 | 0.804 | 0.813 | 0.038 | 0.038 | 0.042 | Read 23:600 |
| | 0.781 | 0.781 | 0.791 | 0.038 | 0.038 | 0.042 | Read 24:580 |
| | 0.821 | 0.824 | 0.827 | 0.038 | 0.038 | 0.042 | Read 24:600 |
| | 0.797 | 0.801 | 0.804 | 0.038 | 0.038 | 0.042 | Read 25:580 |
| | 0.845 | 0.849 | 0.848 | 0.038 | 0.038 | 0.042 | Read 25:600 |
| | 0.821 | 0.825 | 0.824 | 0.038 | 0.038 | 0.042 | Read 26:580 |
| | 0.868 | 0.875 | 0.872 | 0.038 | 0.038 | 0.042 | Read 26:600 |
| | 0.845 | 0.852 | 0.850 | 0.038 | 0.038 | 0.042 | Read 27:580 |
| | 0.894 | 0.900 | 0.898 | 0.038 | 0.038 | 0.042 | Read 27:600 |
| | 0.871 | 0.877 | 0.875 | 0.038 | 0.038 | 0.042 | Read 28:580 |
| | 0.937 | 0.945 | 0.947 | 0.038 | 0.038 | 0.042 | Read 28:600 |
| | 0.914 | 0.923 | 0.924 | 0.038 | 0.038 | 0.042 | Read 29:580 |
| | 0.983 | 1.004 | 0.988 | 0.038 | 0.038 | 0.042 | Read 29:600 |
| | 0.959 | 0.980 | 0.964 | 0.038 | 0.038 | 0.042 | Read 30:580 |
| | 1.001 | 1.022 | 1.007 | 0.038 | 0.038 | 0.042 | Read 30:600 |
| | 0.978 | 1.000 | 0.984 | 0.038 | 0.038 | 0.042 | Read 31:580 |
| | 1.004 | 1.025 | 1.012 | 0.038 | 0.038 | 0.042 | Read 31:600 |
| | 0.981 | 1.003 | 0.989 | 0.038 | 0.038 | 0.042 | Read 32:580 |
| | 1.007 | 1.028 | 1.020 | 0.038 | 0.038 | 0.042 | Read 32:600 |
| | 0.984 | 1.005 | 0.997 | 0.038 | 0.038 | 0.042 | Read 33:580 |
| | 1.011 | 1.034 | 1.026 | 0.038 | 0.038 | 0.042 | Read 33:600 |
| | 0.987 | 1.011 | 1.003 | 0.038 | 0.038 | 0.042 | Read 34:580 |
| | 1.019 | 1.044 | 1.036 | 0.038 | 0.038 | 0.042 | Read 34:600 |
| | 0.996 | 1.021 | 1.013 | 0.038 | 0.038 | 0.042 | Read 1:580 |
| D | | | | | | | |

Take photos after taking out the enzyme labeled instrument after running.

The bacteria with pH = 4.5 and pH = 5 turned blue and the acid induced promoter expression. pH = 7 did not turn blue and the promoter expression was weak.





Drawing graphics:

