

iGEM 8/31

---

# Quick Hits

---

- Isolated PbR by PCR
- Added PCR cleanup to our protocols after DPN1
- Gibsoned and transformed Pb Repressor/88 (failed due to incorrect homology)
- Ligated iPCR of Pb Promoter/94 and pLux/94
  - Transformed, Liquid Culture for Sequencing
- Gibsoned LuxR/88
  - Transformed, Liquid Culture for Sequencing
- Developed Gantt Chart for plasmid progression
- September-Book plane tickets/hotel room (new fiscal year)

# Status

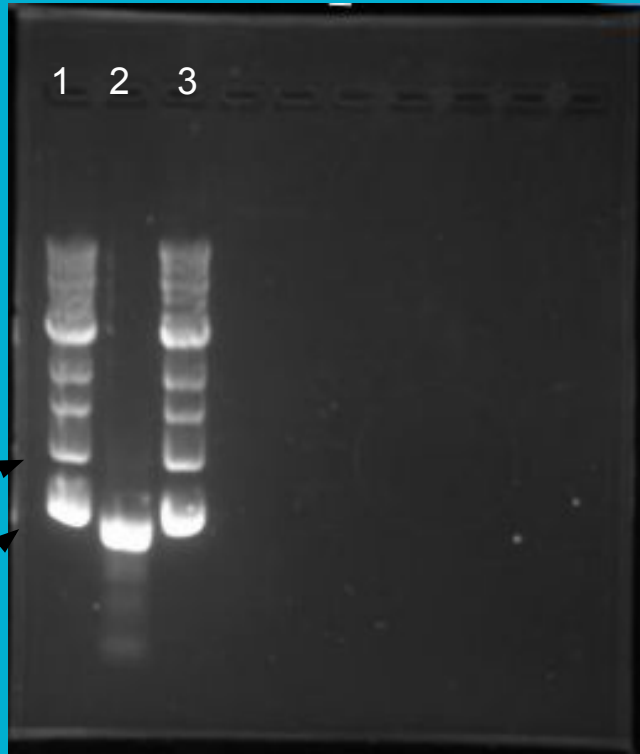
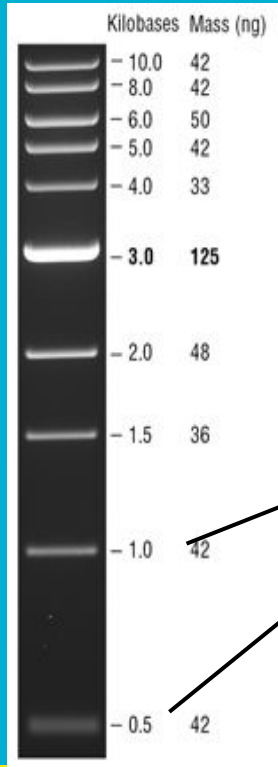
---

ChrB/88 (Christian)		ChrP/94 (Michael)		PbR/88 (Liza)	
Steps:	Completed?	Steps:	Completed?	Steps:	Completed?
PCR	x	PCR	x	PCR	x
Gel	x	Gel		Gel	x
DPN1 Digest	x	DPN1 Digest		DPN1 Digest	x
PCR Cleanup	x	PCR Cleanup		PCR Cleanup	x
Gibson		Gibson		Gibson	
Transformation		Transformation		Transformation	
Liquid Culture		Liquid Culture		Liquid Culture	
Miniprep		Miniprep		Miniprep	
Primers	x	Primers	x	Primers	x
Sequencing		Sequencing		Sequencing	
<b>Notes:</b> First transformation failed		<b>Notes:</b>		<b>Notes:</b> Running low (maybe run PCR again)	

# Status

PbA/94 (Jacob)		LuxR/88 (Umut)		pLux/94	
Steps:	Completed?	Steps:	Completed?	Steps:	Completed?
iPCR	x	PCR	x	iPCR	x
Gel	x	Gel	x	Gel	x
DPN1 Digest	x	DPN1 Digest	x	DPN1 Digest	x
PCR Cleanup	x	PCR Cleanup	x	PCR Cleanup	x
Ligate	x	Gibson	x	Ligate	x
Transformation	x	Transformation	x	Transformation	x
Liquid Culture	x	Liquid Culture	x	Liquid Culture	x
Miniprep	x	Miniprep	x	Miniprep	x
Primers	x	Primers	x	Primers	x
Sequencing		Sequencing		Sequencing	
<b>Notes:</b>		<b>Notes: Re-mini Prep</b>		<b>Notes:</b>	

# Gel Results for PbR

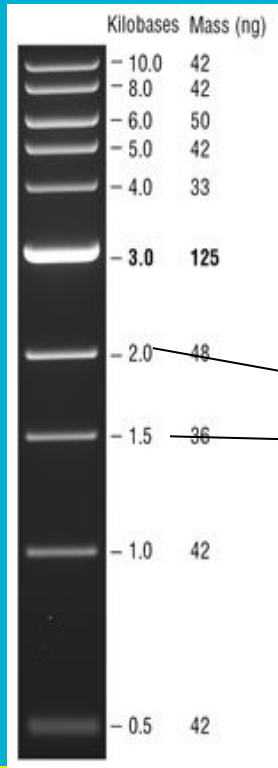


Expected Length: 480bp

Lanes 1 and 3: 1Kb Ladder

Lane 2: PbR

# Gel Results for 88 Backbone



Expected Length: ~1800 bp

Lanes 1 and 6: 1 kb ladder

Lanes 2 and 3: 88 backbone for chromium gibson

Lanes 4 and 5: 88 backbone for lead gibson

# Questions

---

Who should we contact to get some Chromium and Lead for testing?

Can we use Lead Nitrate? We found a science supply website with it.