

---

# iGEM Meeting 8/24

---

---

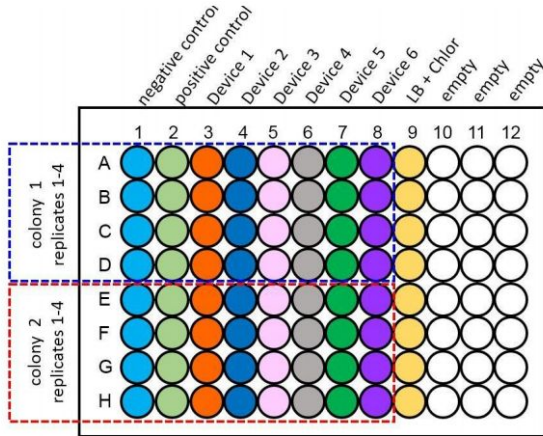
## Quick Hits:

- Interlab Data -- Complete & Submitted!
  - 5/5 of us are signed up for the Jamboree
  - Officially on the Environmental Track
  - Ran successful gels and digested ChrB, PbrR Repressors
  - iPCR'd PbrAP Promoter, at various stages for all 6 plasmids
-

# Interlab

## Cell Measurement

- Absorbance and Fluorescence measurements from the plate reader were consistent



## CFU Calibration

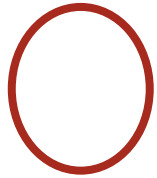
- All plates grew colonies of expected size



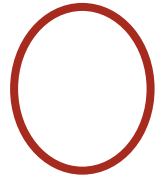
# Status of 6 Plasmids

---

# ChrB Repressor / 88 Backbone

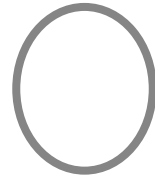


**PCR**



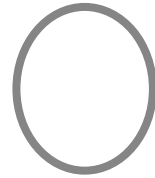
**Gel/Digest**

Gel looks good,  
DPN1 digested!



**Gibson,  
Transform**

Today: Gibson with  
88 backbone,  
Transform



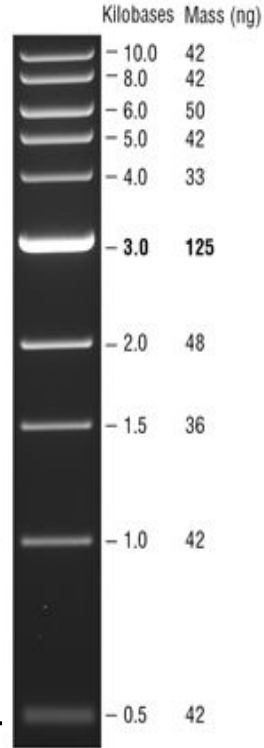
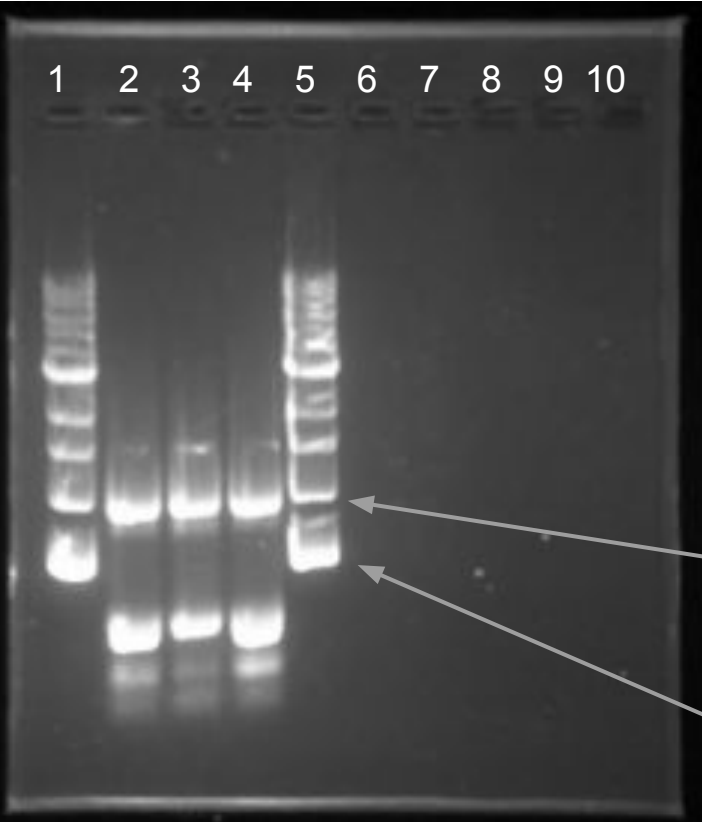
**Pick Colonies,  
Miniprep,  
Sequence**

Monday: Pick colonies,  
Liquid Culture

Tuesday: Miniprep, send  
to sequencing

---

# Gel Results for ChrB



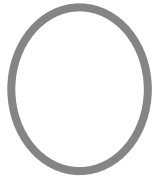
Expected Length: 970 bp

Lane 1 and 5: 1 Kb Ladder

Lanes 2, 3, 4: ChrB

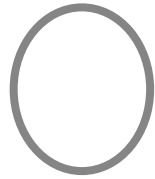
---

# ChrP Promoter / 94 Backbone



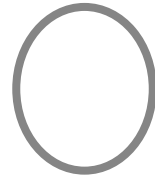
**PCR**

Going to PCR on  
Monday

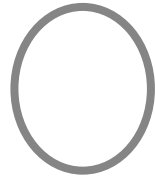


**Gel, Gibson**

DPN1 digest before  
gibson



**Transform**

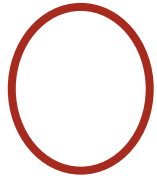


**Pick Colonies,  
Miniprep,  
Sequence**

---

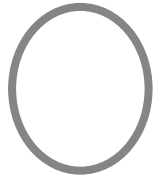
---

# PbrR Repressor / 88 Backbone



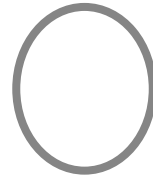
**PCR**

PCR currently



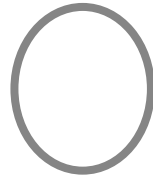
**Gel / Digest**

Digest and run gel  
after meeting



**Gibson,  
Transform**

Today: Gibson with  
88 backbone,  
Transform



**Pick Colonies,  
Miniprep,  
Sequence**

Monday: Pick colonies,  
Liquid Culture

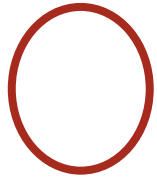
Tuesday: Miniprep, send  
to sequencing

---

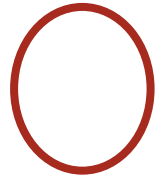


---

# PbrAP Promoter / 94 Backbone

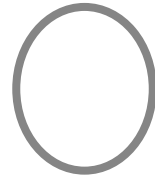


**iPCR**



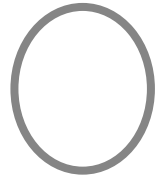
**Gel**

Gel looks good



**Transform**

Monday: DPN1  
digest, Ligate,  
Transform



**Pick Colonies,  
Miniprep,  
Sequence**

Tuesday: Pick colonies,  
Liquid Culture

Wednesday: Miniprep,  
send to sequencing

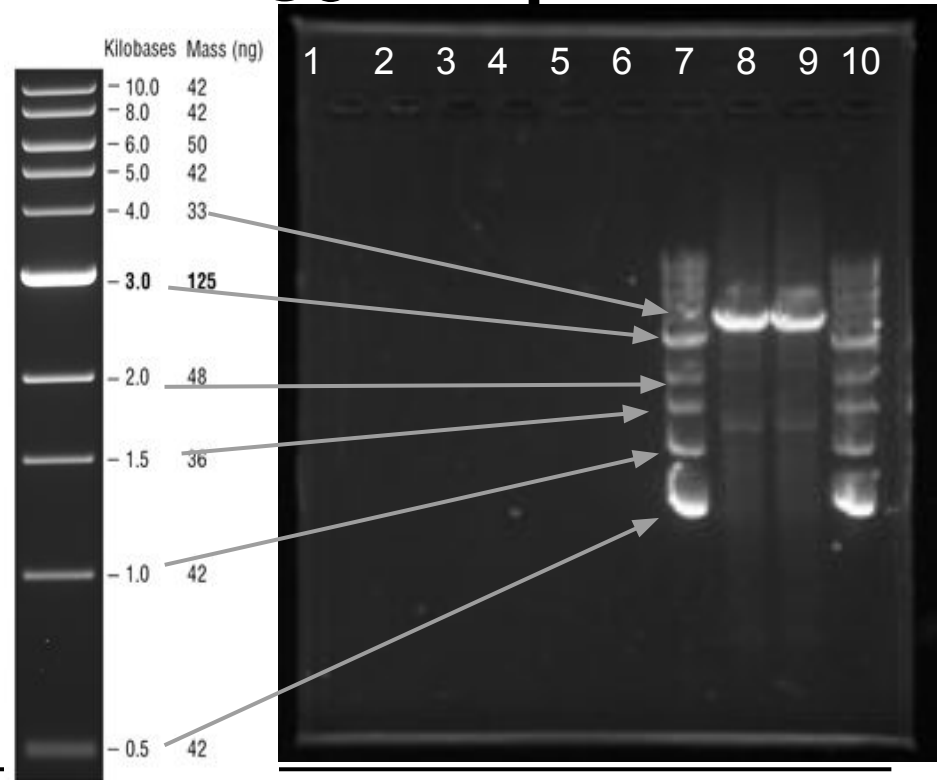
---

# PbrAP / 94 backbone Gel (3900 bp)

Expected Length: 3900 bp

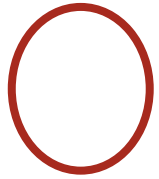
Lane 7 and 10: 1 Kb Ladder

Lanes 8 and 9: PbrAP

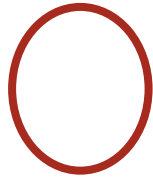


---

# LuxR Repressor / 88 Backbone

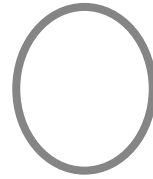


**PCR**



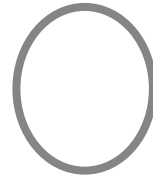
**Gel**

Looks good!



**Gibson**

DPN1 digest, Gibson  
with 88 backbone



**Transform,  
Miniprep,  
Sequence**

Pick colonies, Liquid  
Culture

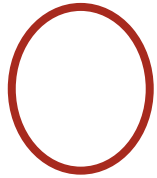
Miniprep, send to  
sequencing

\* This is the plasmid we originally sent to sequencing and received poor results -- we are going to re-Gibson and improve upon past techniques.

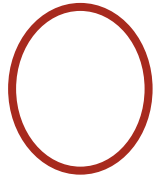
---

---

# pLux Promoter / 94 Backbone

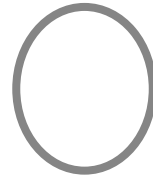


**iPCR**



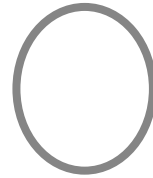
**Gel**

Looks good!



**Gibson,  
Transform**

Monday: DPN1  
Digest, Gibson,  
Transform



**Pick Colonies,  
Miniprep,  
Sequence**

Pick colonies, Liquid  
Culture

Miniprep, send to  
sequencing

---

---

---

# Questions

- High school student has expressed an interest in touring our lab. How can we get permission?
  - Lab space after 9/24?
-