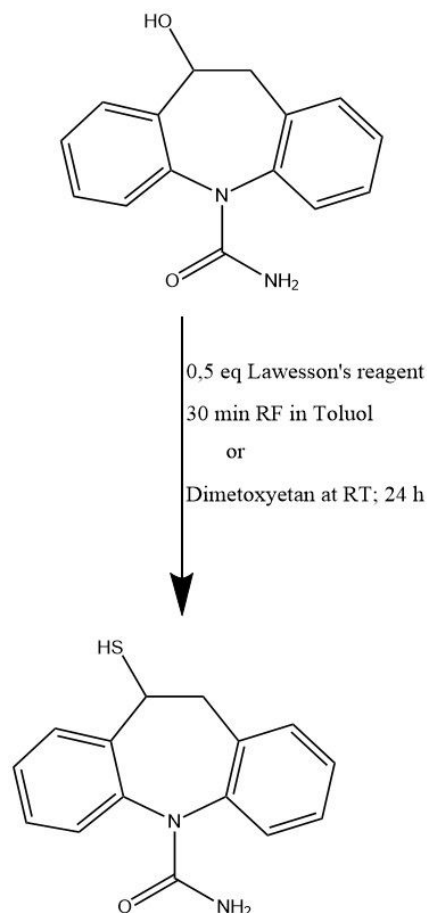


Paper:

Direct Conversion of Alcohols into Thiols, Takehiko Nishio, Department of Chemistry,
University of Tsukuba, Tsukuba-shi, Ibaraki 305, Japan

Bild:**Approach:**

	M [g/mol]	m [g]	Eq	n [mmol]
Eslicarbazepin	254,11	0,18	1	0,712
Lawesson's reagent (LR)	404,47	0,14	0,5	0,356

Performance:

Eslicarbazepin (0,18 g; 0,712 mmol) was solved in 200 ml dry and degassed DME.

The LR (0,14 g; 0,356 mmol) was added and stirred under Argon at room temperatur over night.

The solvent was removed in vakuo, and the residue was purified by column silica chromatographie with EtOAc:MeOH:Petroleum ether (10:1:2)