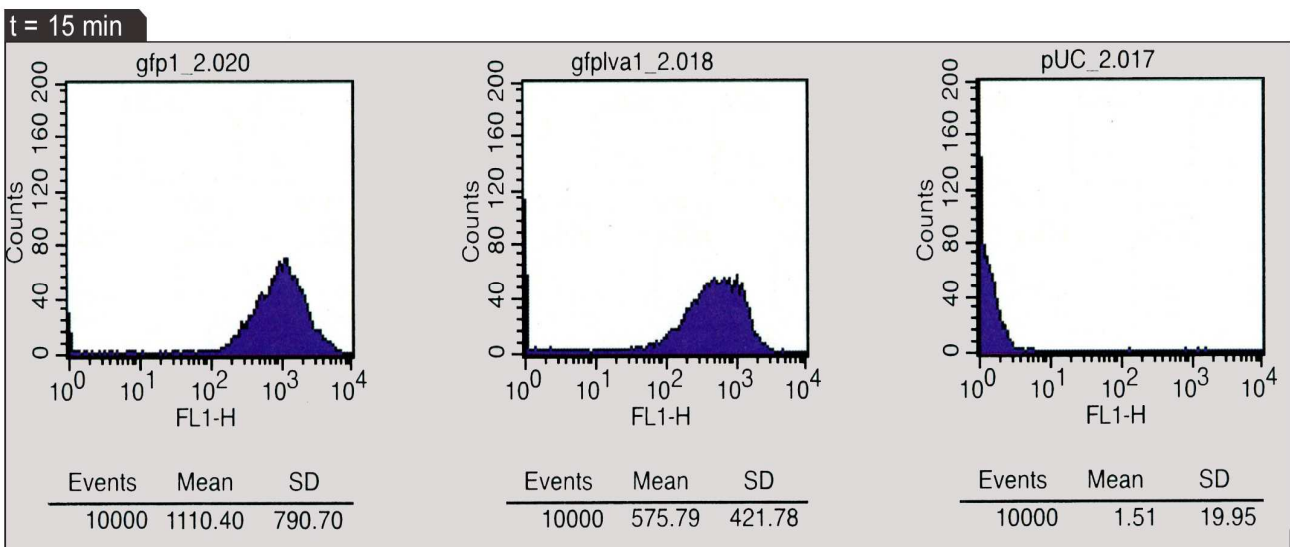
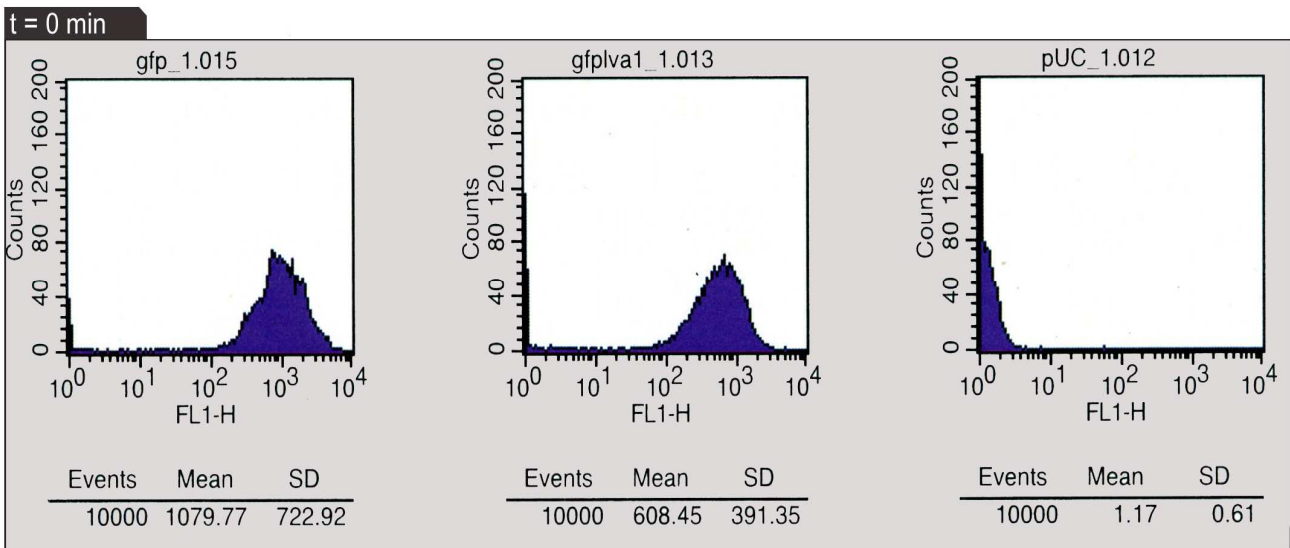


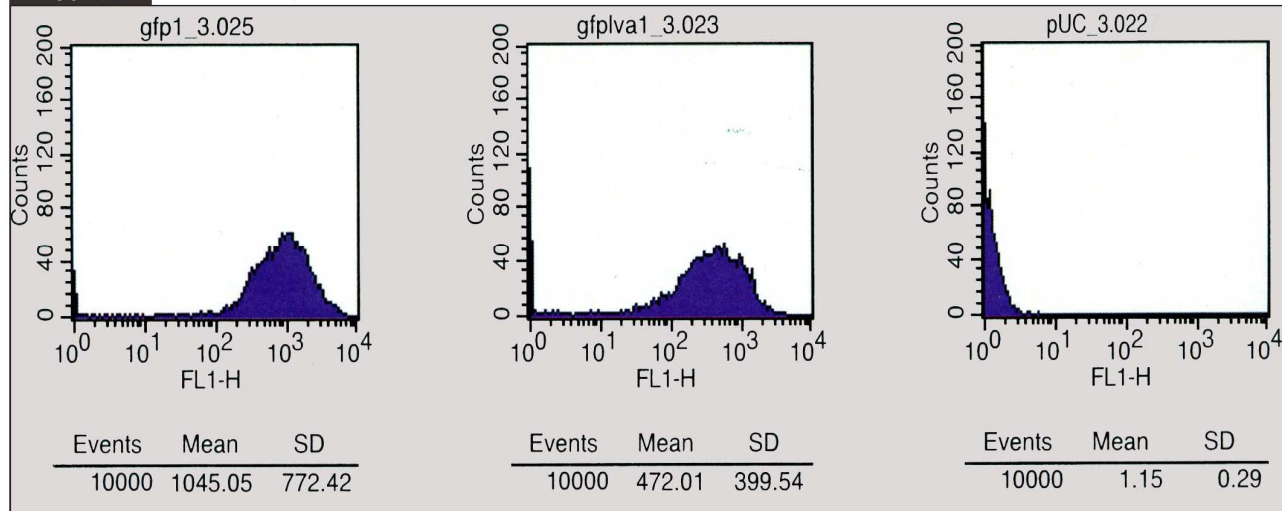
FACS of GFP and GFP-LVA

Fluorescence of cells containing GFP, GFP with LVA tag or pUC18 was measured with a Becton Dickinson FACSCalibur. This was done at different time intervals after the cells were transferred to minimal ABT medium. With CELLQuest™ analysis software, a histogram of each measurements was drawn and the mean and SD were calculated. The results are shown below. We worked with biological repeats, so there were two samples of GFP and two samples of GFP-LVA.

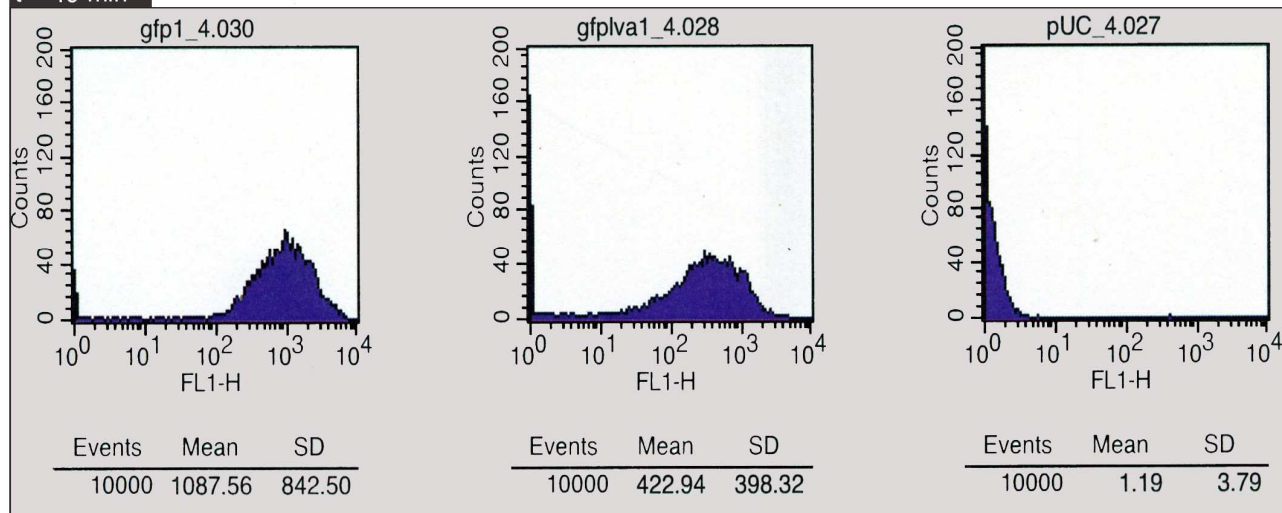
Sample 1



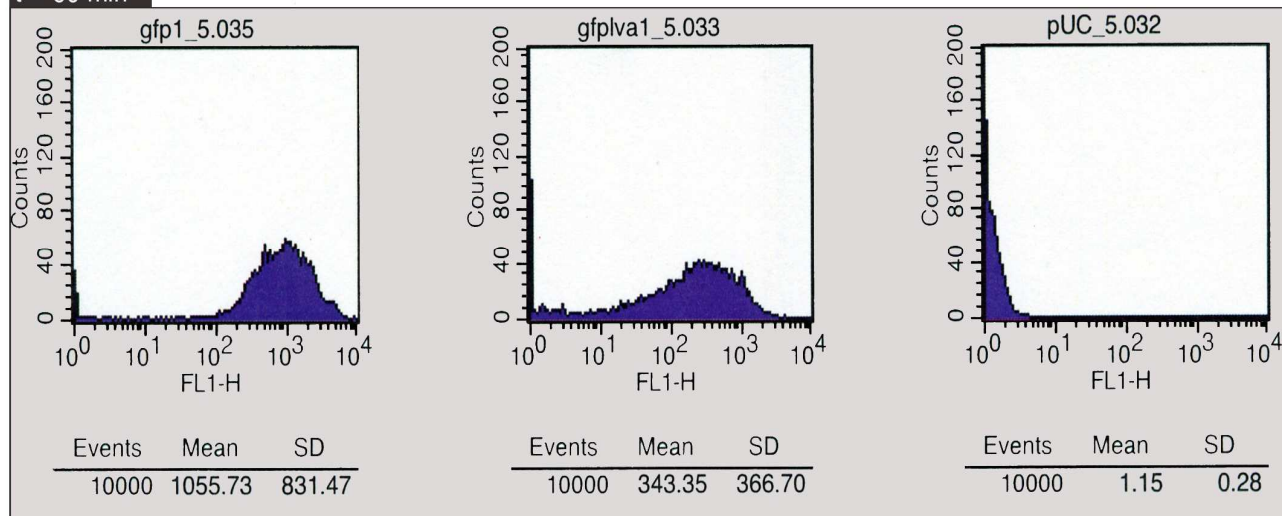
t = 30 min



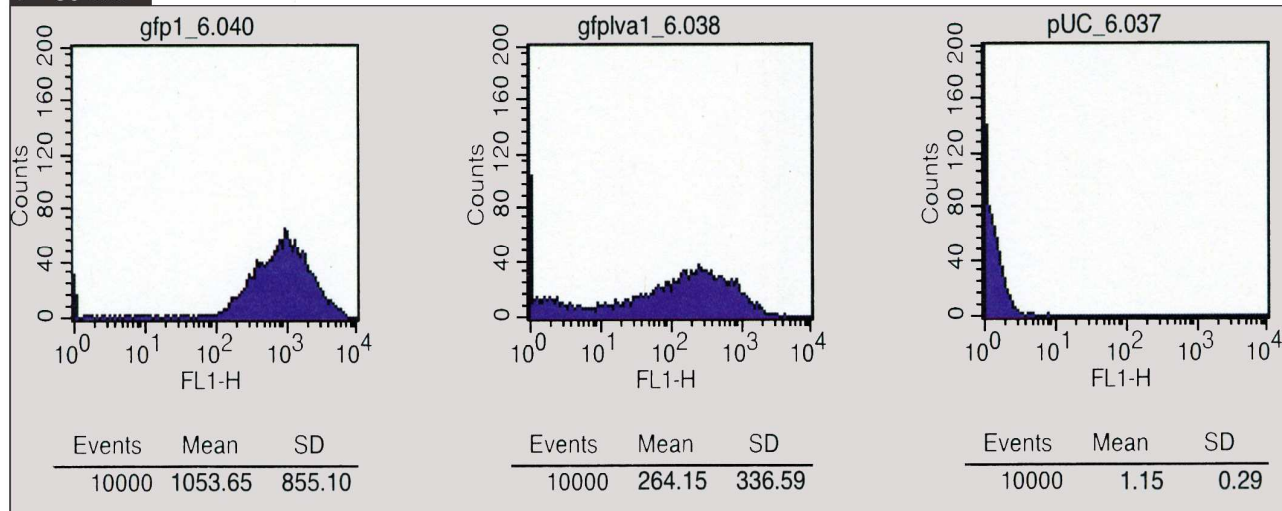
t = 45 min



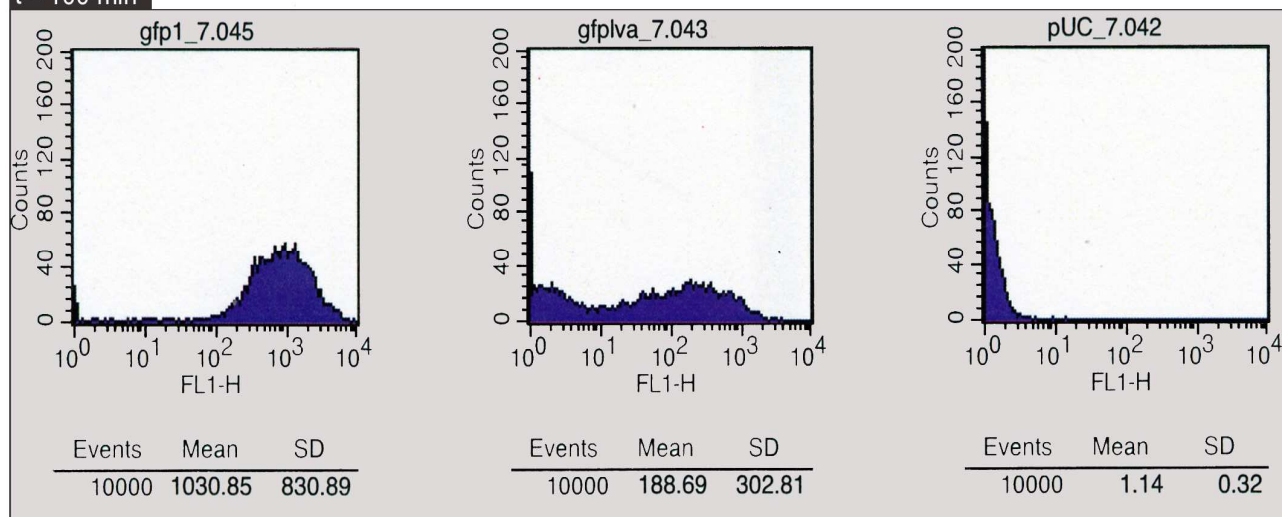
t = 60 min



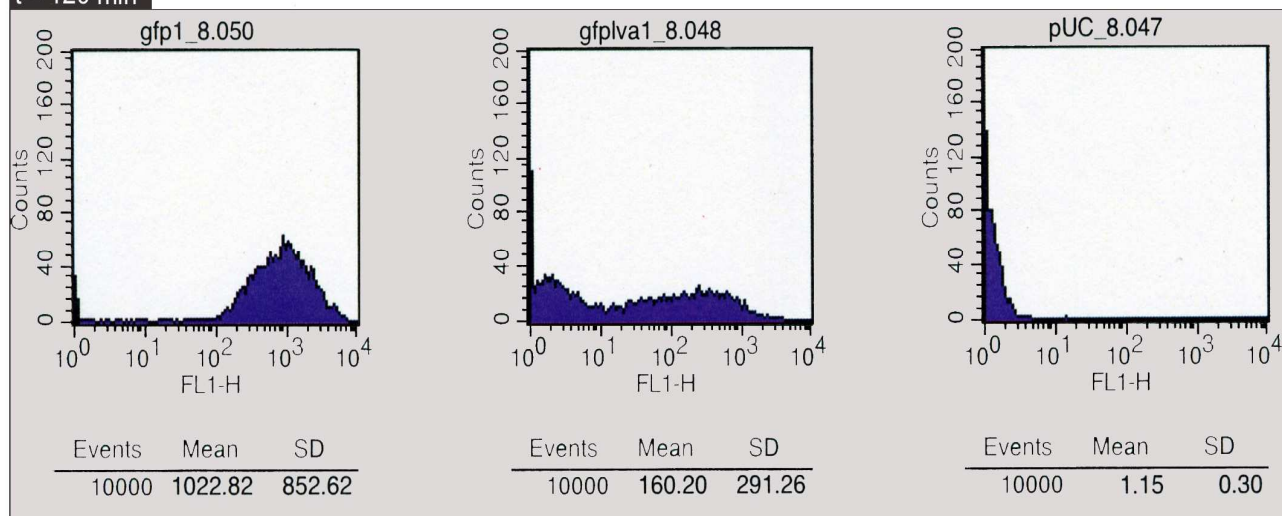
t = 80 min



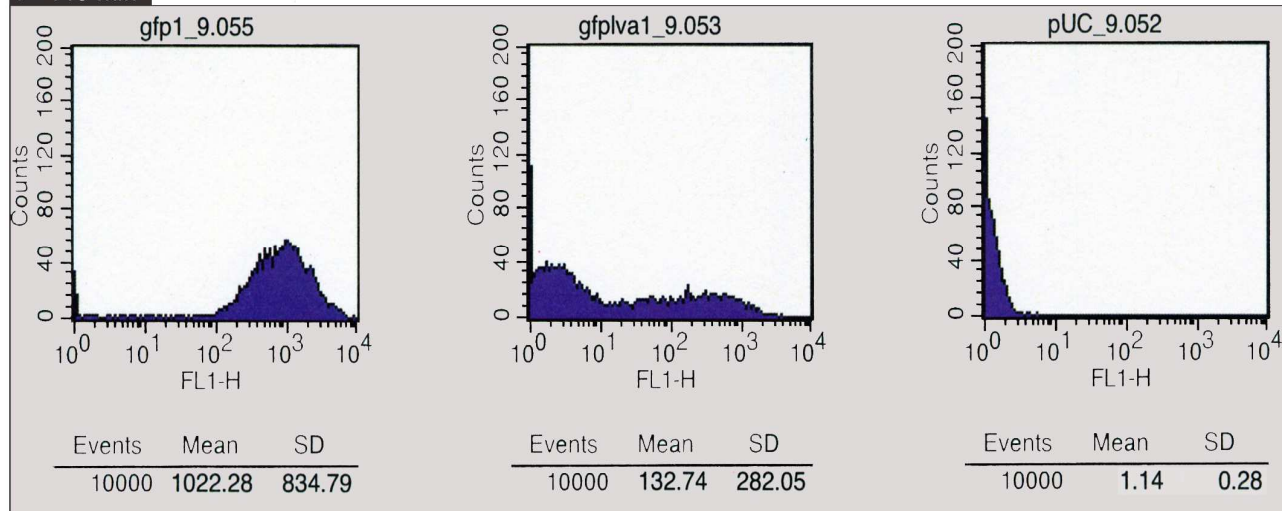
t = 100 min



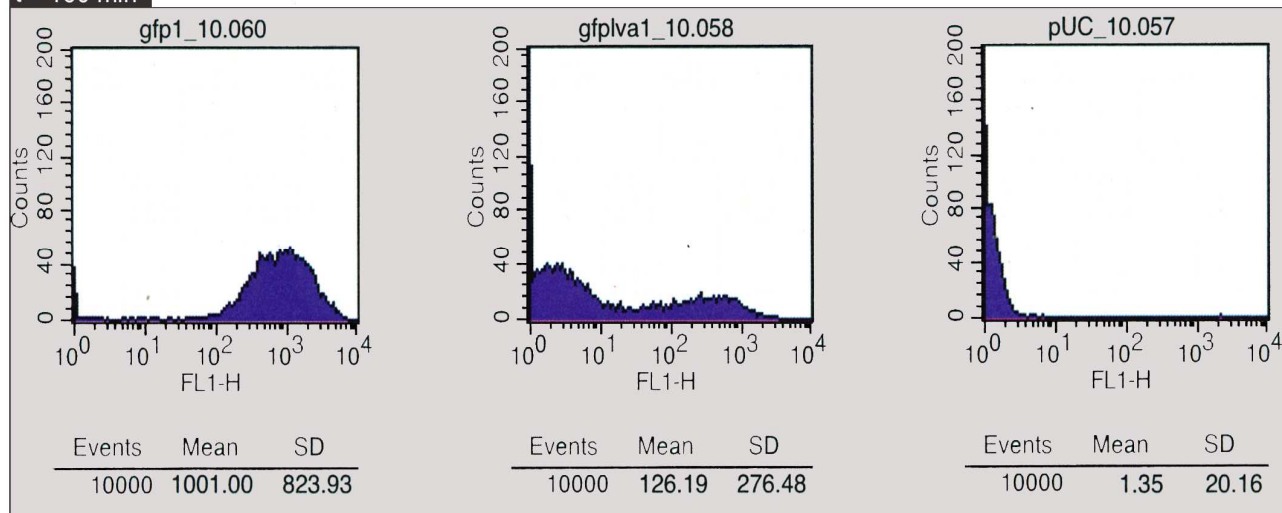
t = 120 min



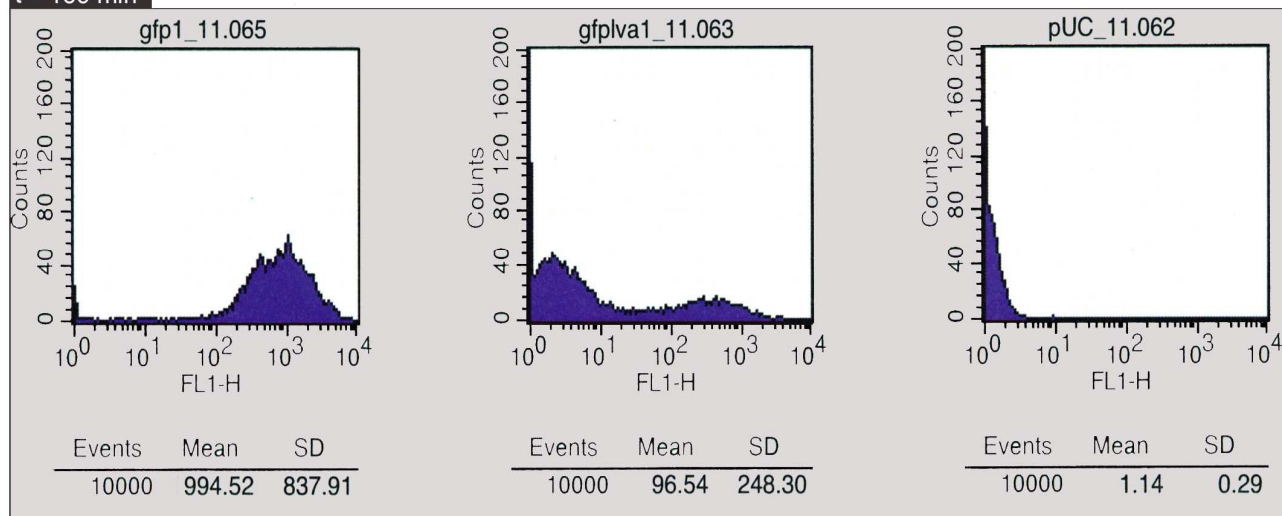
t = 140 min



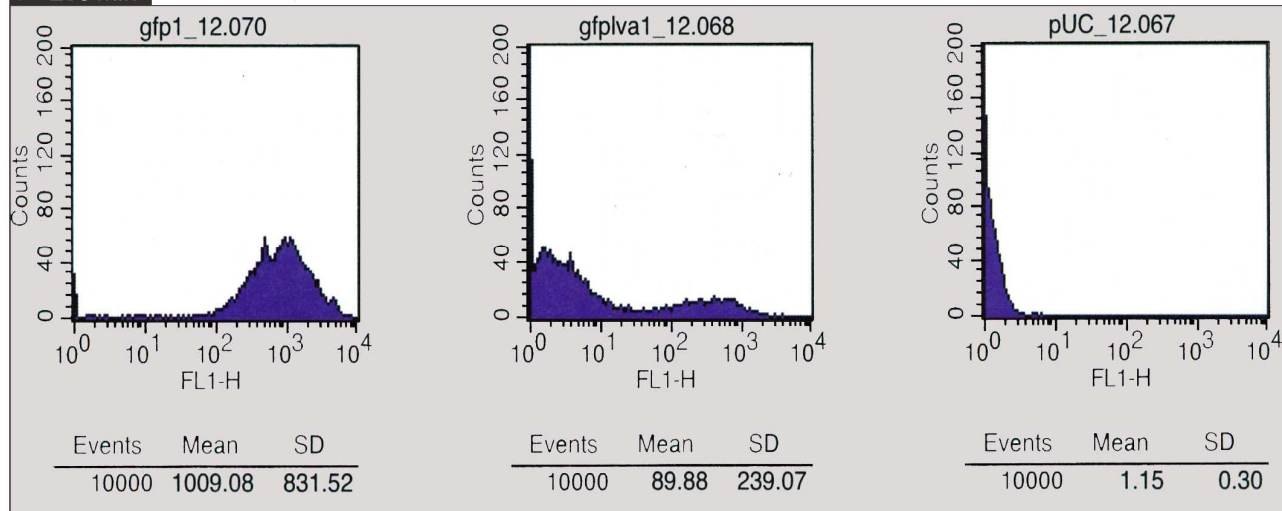
t = 160 min



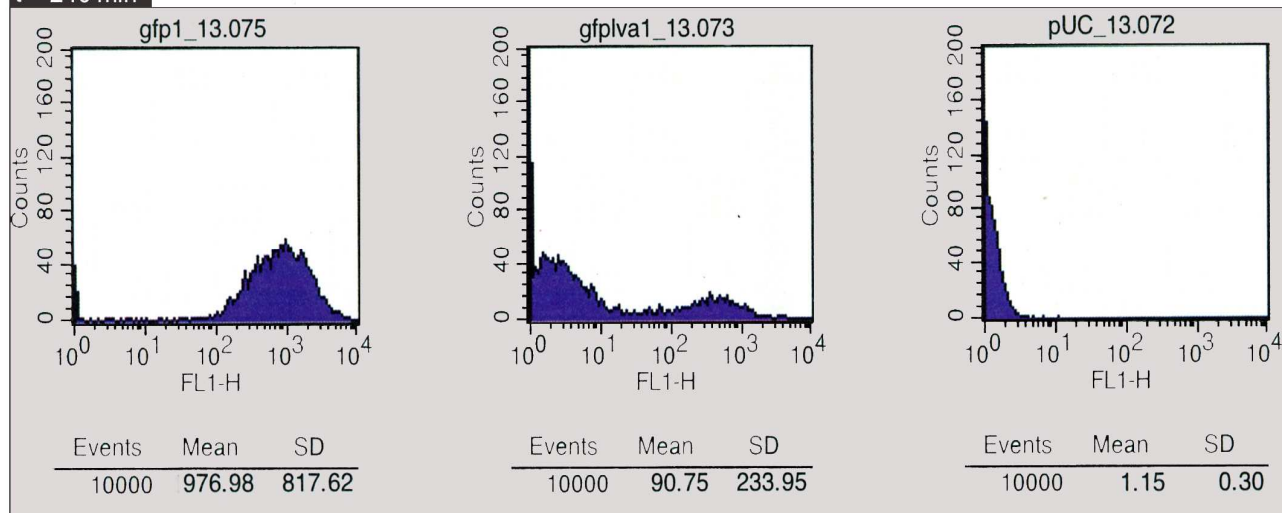
t = 185 min



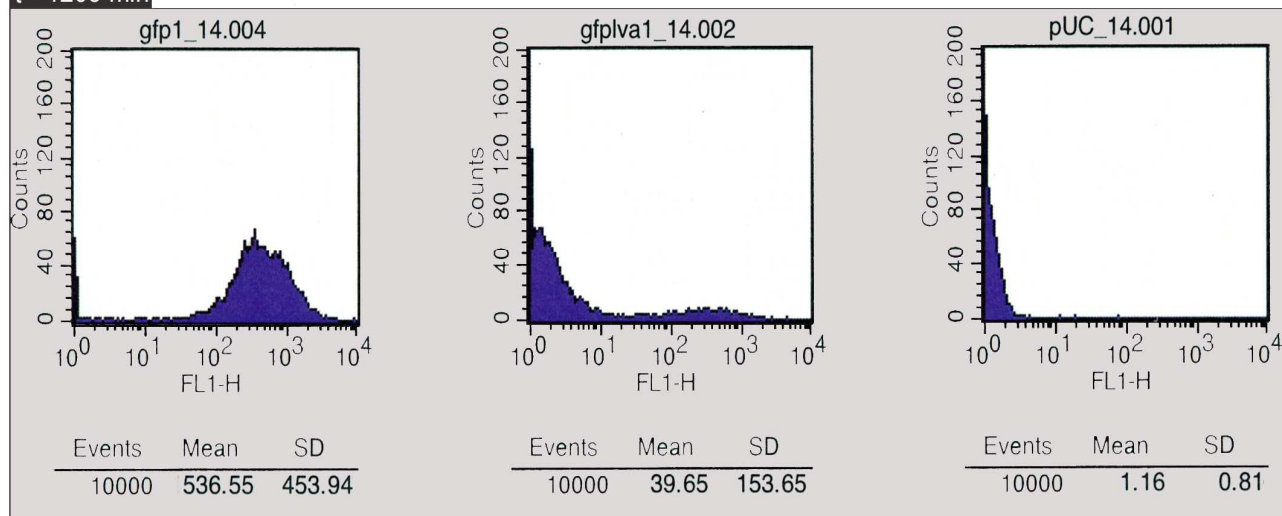
t = 215 min



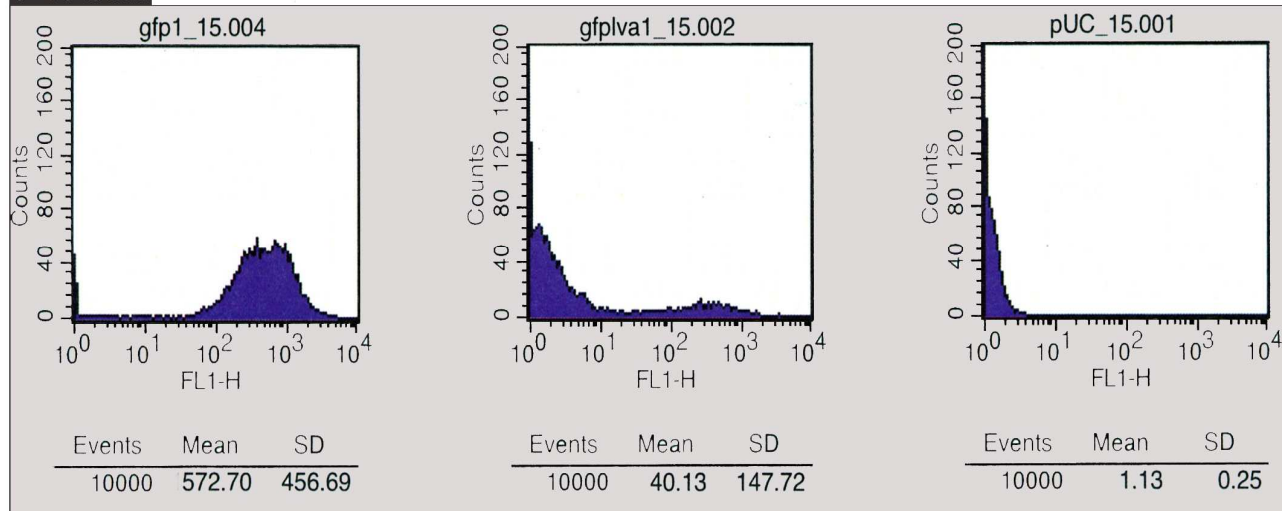
t = 240 min



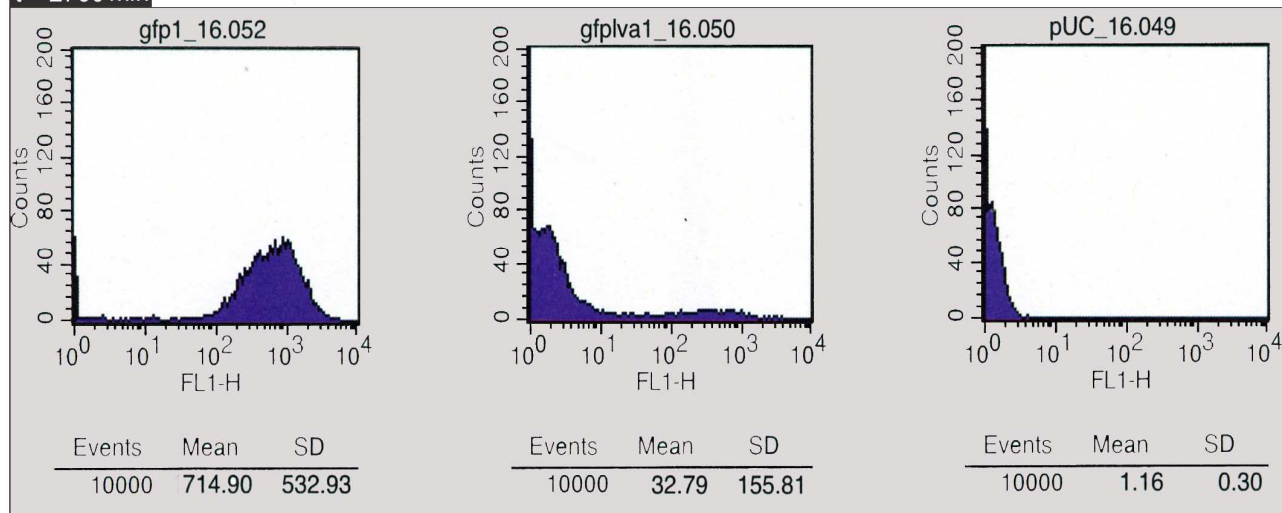
t = 1205 min



t = 1545 min

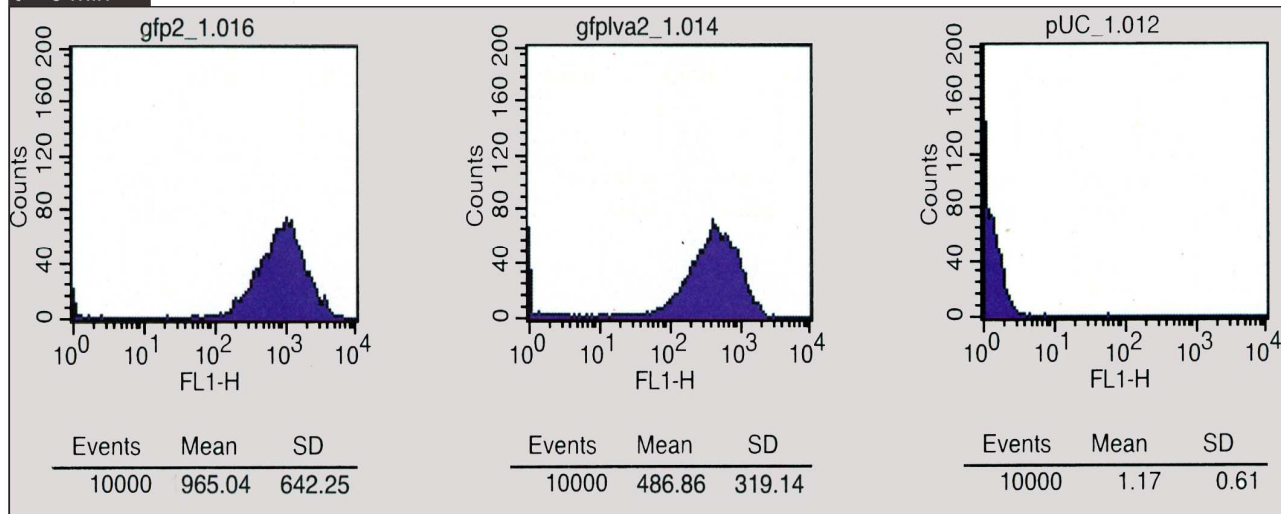


t = 2760 min

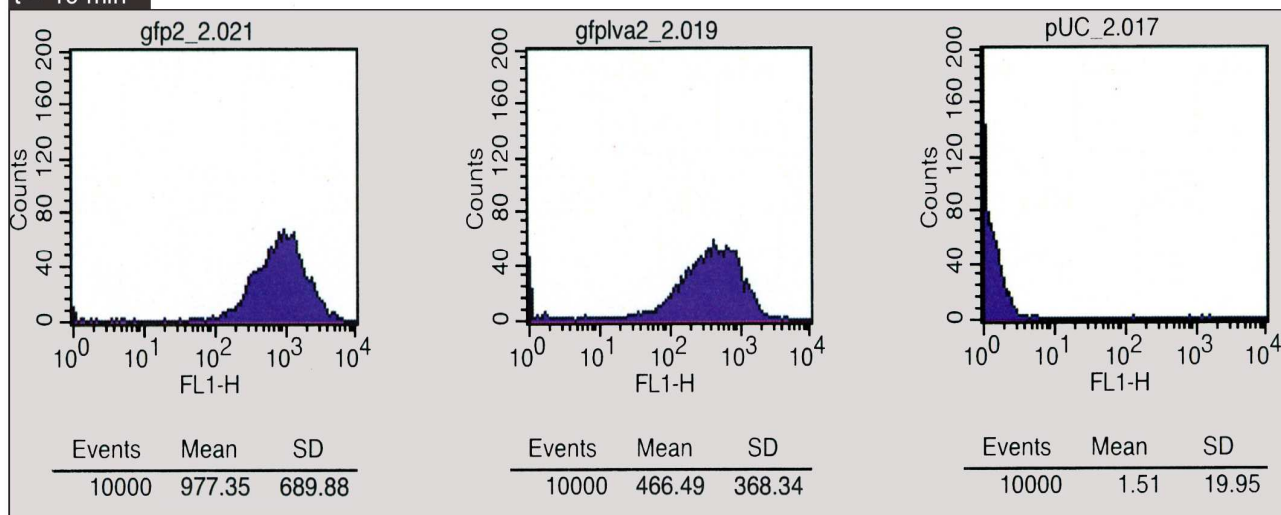


Sample 2

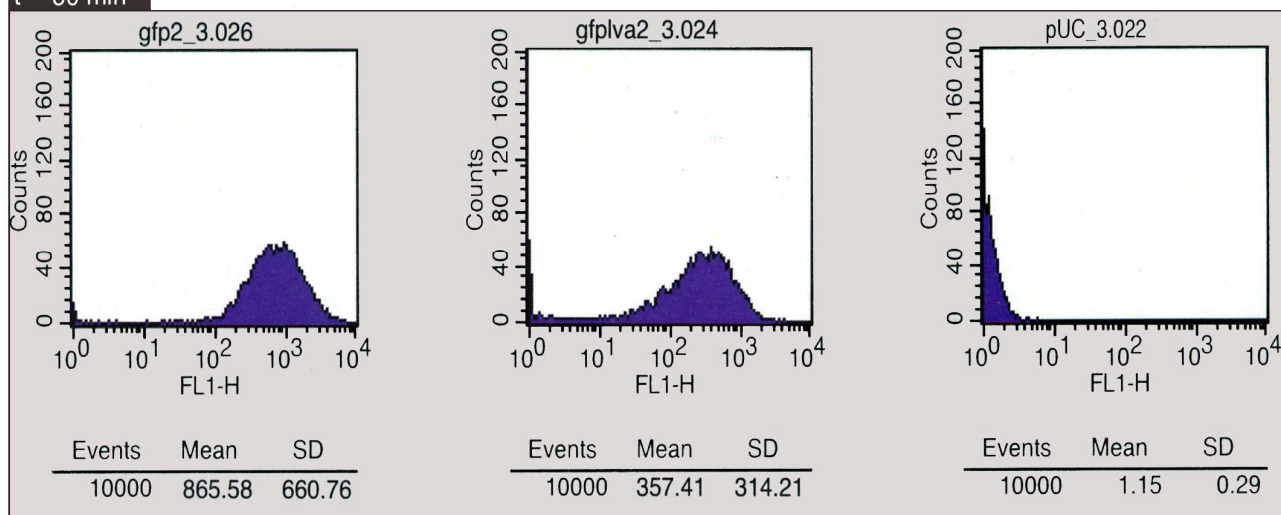
t = 0 min



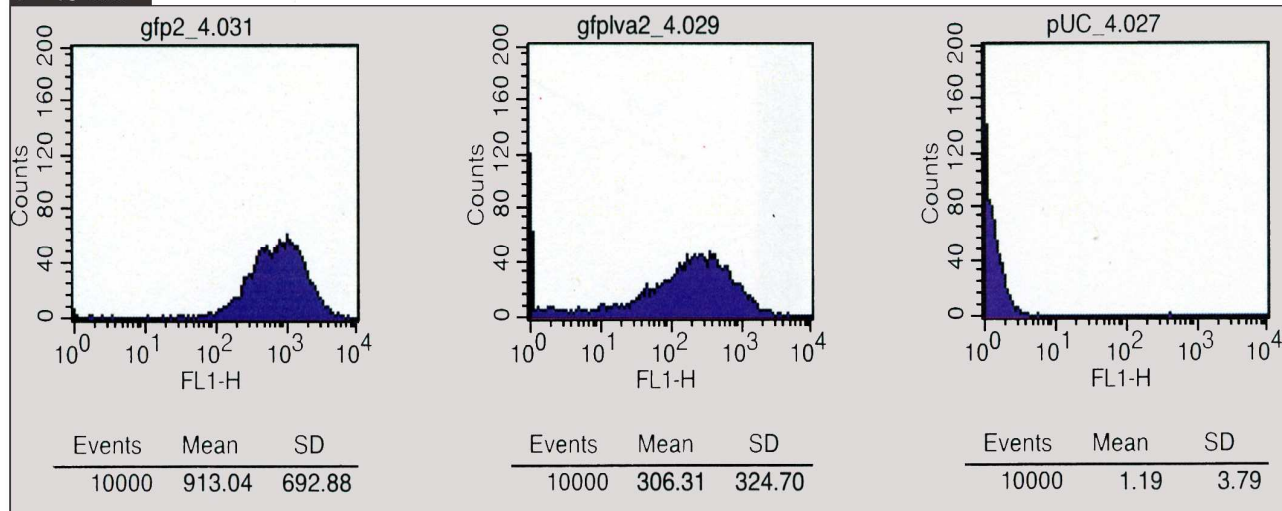
t = 15 min



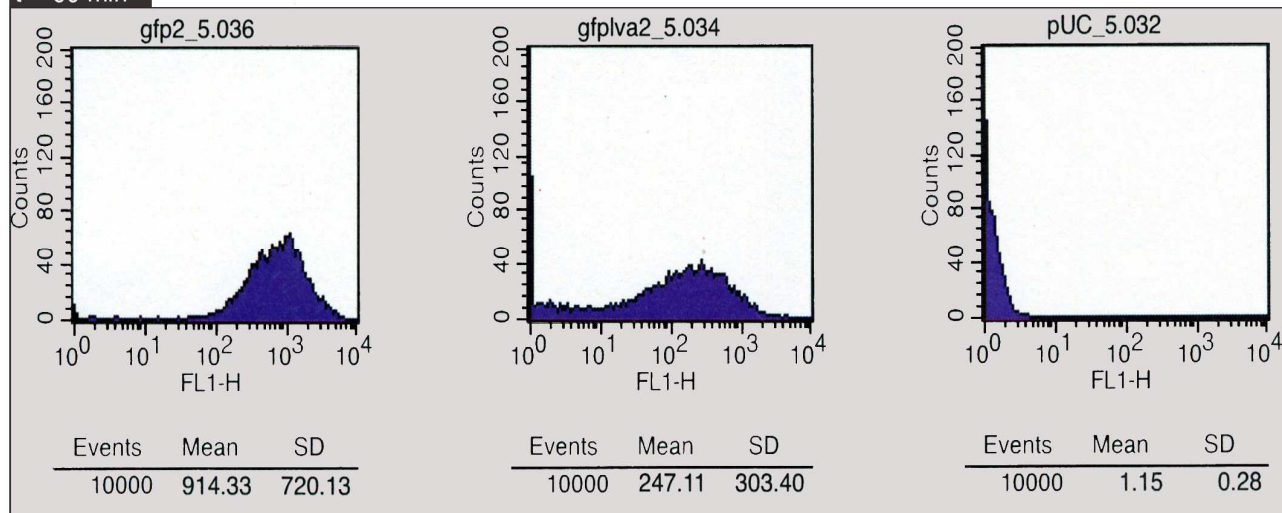
t = 30 min



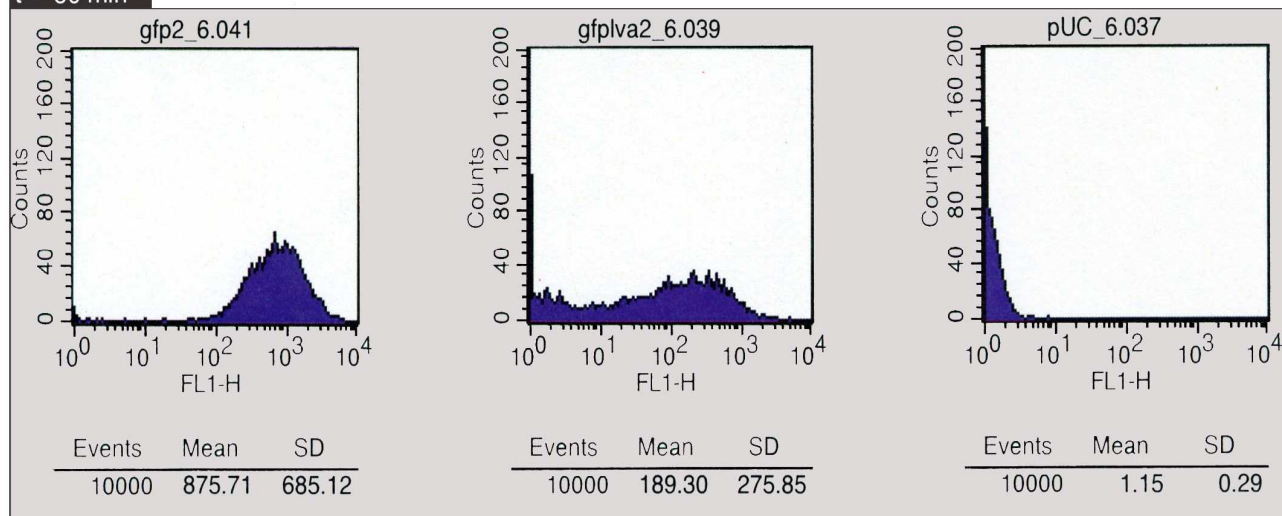
t = 45 min



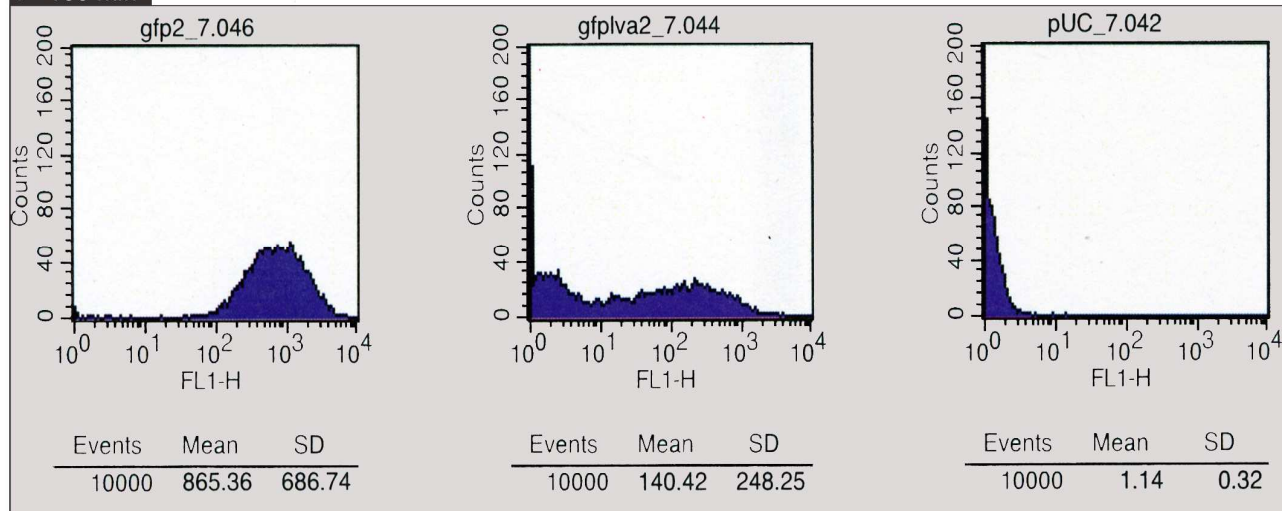
t = 60 min



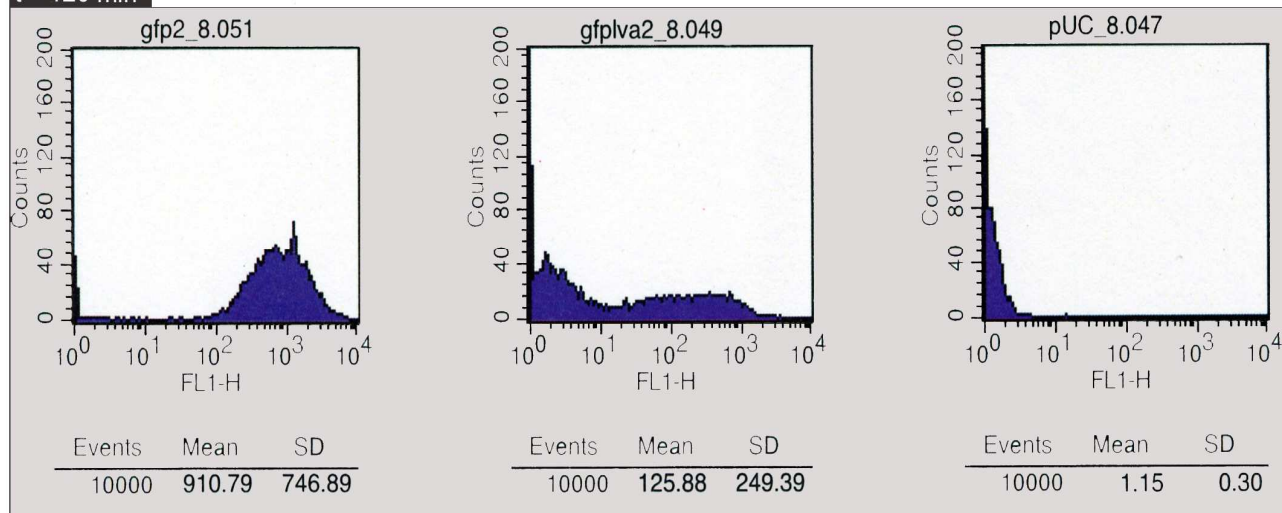
t = 80 min



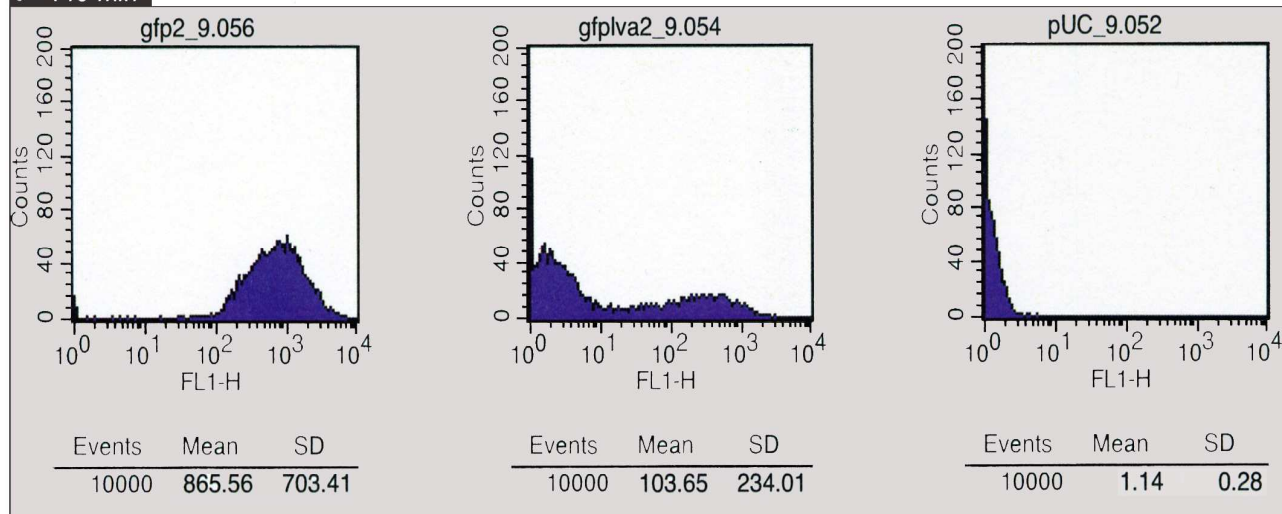
t = 100 min



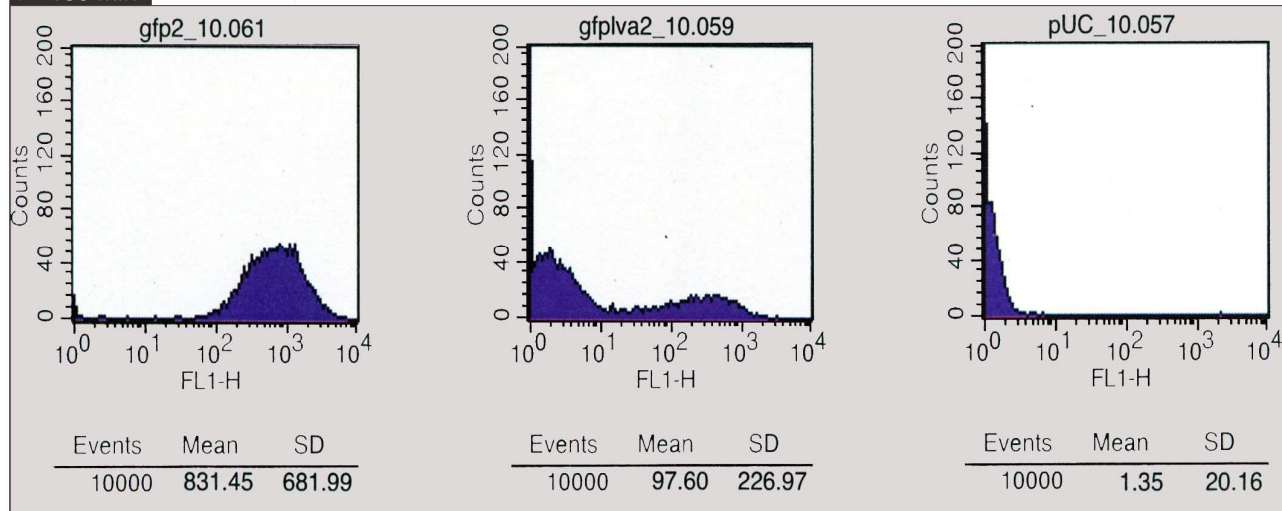
t = 120 min



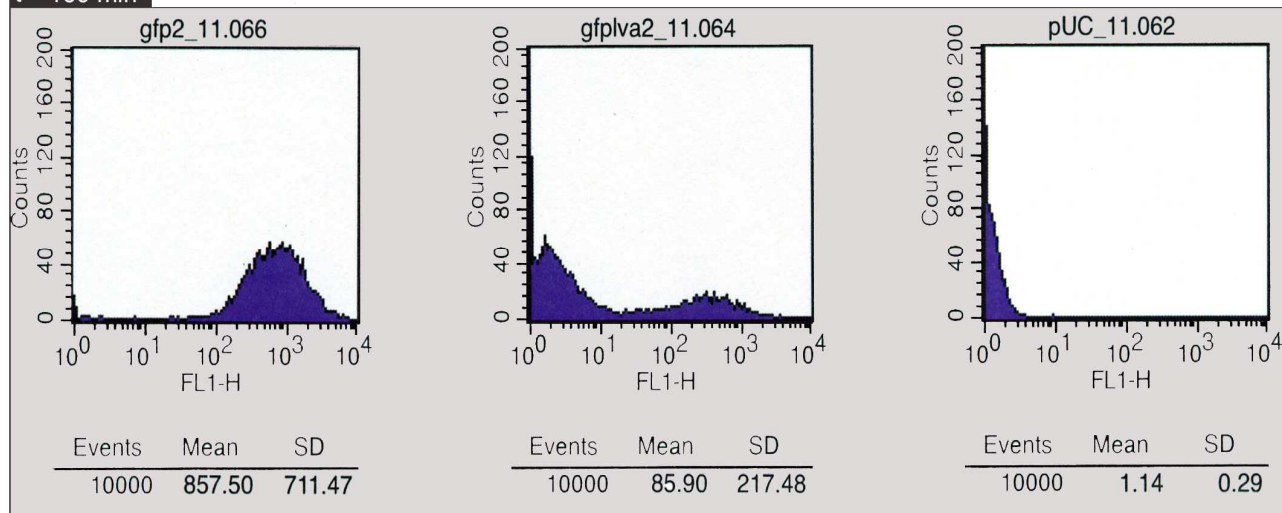
t = 140 min



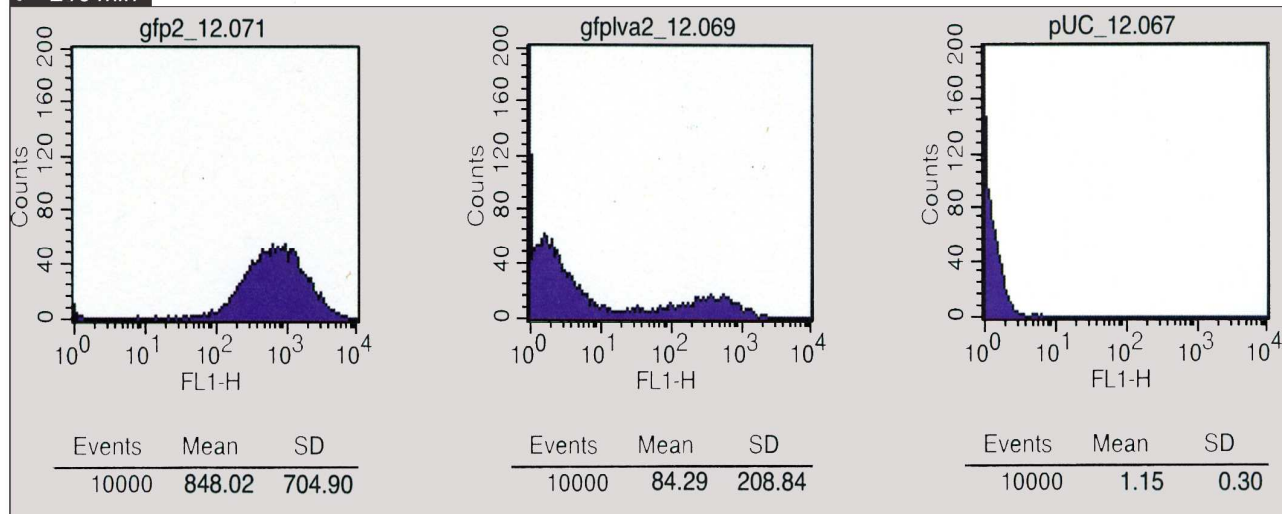
t = 160 min



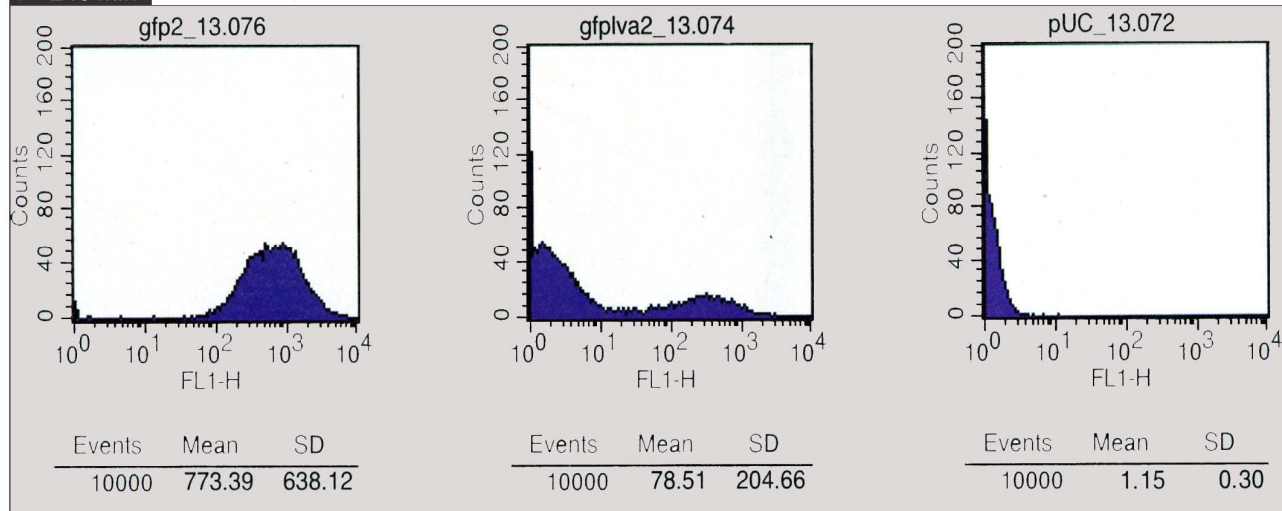
t = 185 min



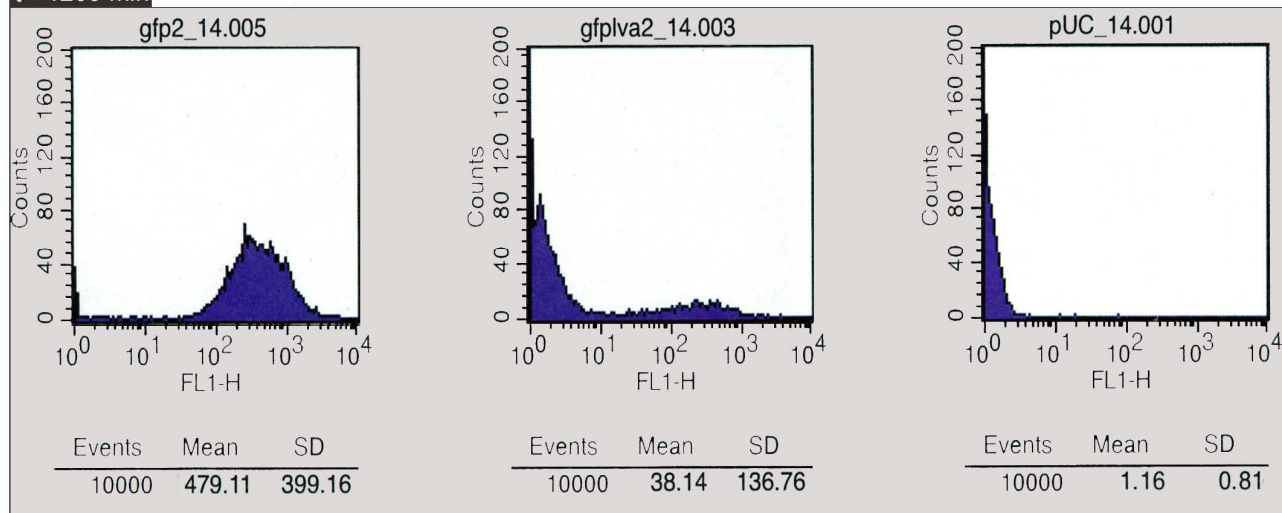
t = 215 min



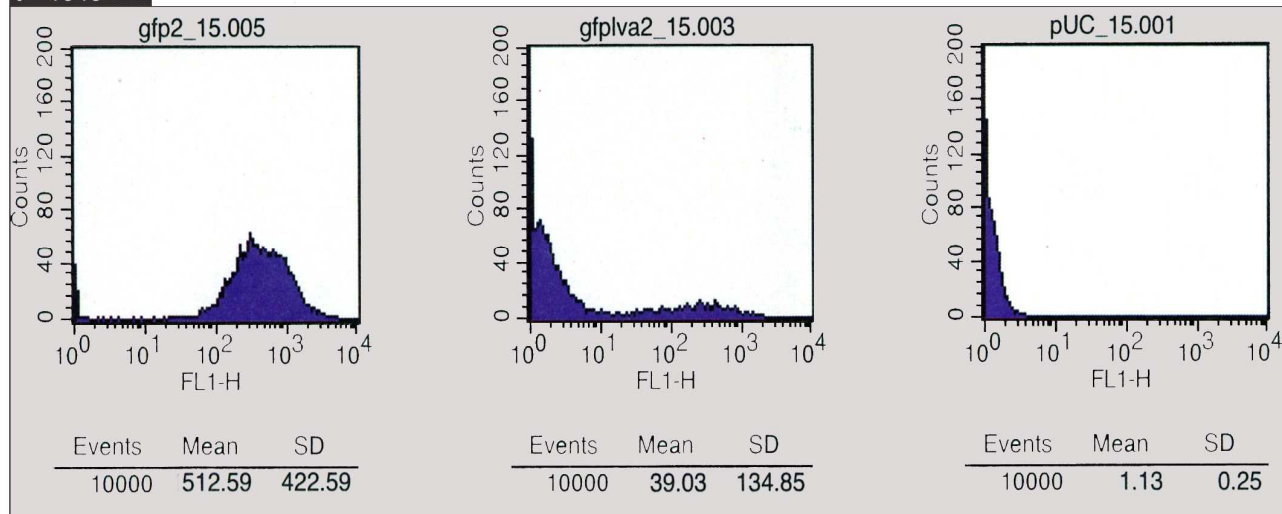
t = 240 min



t = 1205 min



t = 1545 min



t = 2760 min

